

**Accessories for all areas of use**

## **General information on technical medical accessories**

The comprehensive modul technik GmbH accessories programme enables individual adaptation of medical supply units for the requirements of each workplace.

Medical supply units can therefore be adapted to new local conditions either during the planning phase or retrospectively.

As a result of the uncomplicated and varied structure of the modul technik GmbH accessories programme, there is a variety of possible combinations.

The dimensions of the individual accessories components have proved themselves over many years and are therefore the basis for the standard/basic dimensions used for the consoles, cross-arms, etc. Within reason, however, special dimensions are possible at the request of the customer.

Aluminium and stainless steel are mainly used in manufacturing. Depending on the type, equipment consoles are either made from stainless steel 1.4301 (ground on one side, grain 240) or aluminium.

The multi-use equipment rails (stainless steel or aluminium) are in accordance with DIN EN ISO 19054.

Weight information equates to the average value. Minor measurement differences within an item are not taken into account.

The load defines the maximum permitted load that may be applied to any accessory component by the user.

Important information:

Accessories are delivered to users in a clean condition, but they must nevertheless be cleaned before use. - Do not use solvents such as petrol or ethers.

Only disinfect by wiping. - Pay attention to the disinfectant manufacturer's instructions - Do not allow liquid to get inside installed components - For disinfection, use agents from the surface disinfectant group.

## **Information on the layout of the accessory catalogue**

### **Basic modules**

are the basic equipment of the medical supply system produced by modul technik and are specially tailored to the products concerned. The position and/or length of the basic module is project-specific. Basic modules are factory-fitted. An example of a basic module is an equipment rail fitted to an IV 1054.

### **Expansion modules**

are for the expansion of basic or universal modules. An example of an expansion module is a drawer fitted under a console. Expansion modules can only be used in association with basic or universal modules.

### **Universal modules**

are equipped with suitable supporting devices for standard rails or supporting tubes and can therefore be combined with items from within the modul technik product range. Universal modules include those that can be connected to external equipment by standard connections (e.g. gas supply).

# Table of contents

Page

## Basic modules for IV 1054

Equipment rails (dim. 25 mm x 10 mm) as per DIN EN ISO 19054.....	7
---	---

## Basic modules for IVV 1054

Stainless steel supporting tubes .....	8
--	---

## Basic modules for MEV 8000

Stainless steel supporting tube .....	9
---------------------------------------	---

## Basic modules for VIP 2000 and VIP 2001

Stainless steel supporting tubes .....	10
Cross-arm for telescopic tube (diam. = 20mm), folding .....	10

## Basic modules for OP 3800

Equipment rail pair (dim. 25 mm x 10 mm) as per DIN EN ISO 19054 .....	11
Equipment rail (dim. 25 mm x 10 mm) as per DIN EN ISO 19054.....	11
Stainless steel supporting bolts .....	12

## Basic / Expansion modules for GW 2500, FS 4500 and GW 3600

Aluminium consoles (electrostatically powder coated) .....	13
Stainless steel consoles .....	14
Equipment rails (dim. 25 mm x 10 mm) as per DIN EN ISO 19054, horizontal .....	14

## Basic / Expansion modules for BSP 2500

Aluminium consoles (electrostatically powder coated) .....	15
Aluminium consoles (electrostatically powder coated) with control element for pneumatic brakes .....	16
Aluminium console (electrostatically powder coated) with membrane switch .....	16
Operating handle with actuating elements for pneumatic braking .....	17
Equipment rail pair (dim. 25 mm x 10 mm) as per DIN EN ISO 19054, vertical .....	17
Stainless steel supporting tube (diam. 30 mm), swivelling.....	18
Equipment rail (dim. 25 mm x 10 mm) as per DIN EN ISO 19054, rear.....	18
Equipment rail (dim. 25 mm x 10 mm) as per DIN EN ISO 19054, front .....	18
Docking trolley, mobile .....	19
Docking trolley for various applications, mobile .....	19
Docking equipment .....	19

## Table of contents

<u>Expansion modules for consoles and bearer systems</u>	Page
Drawer module with self closing device and soft closing.....	20
Keyboard module with pull-out keyboard shelf .....	21
Writing tray, pull-out.....	21
 <u>Universal modules: Equipment rails</u>	
Equipment rails (dim. 25 mm x 10 mm) as per DIN EN ISO 19054, for wall fitting .....	22
End caps for stainless steel equipment rail (dim. 25 mm x 10 mm).....	22
Travel limiter .....	22
 <u>Universal modules: Vertical support tube</u>	
Supporting tubes for fitting to equipment rails (dim. 25 mm x 10mm) .....	23
Supporting tubes for fitting to supporting tubes .....	24
 <u>Universal modules: Bearer systems</u>	
Stainless steel monitor carrier system for equipment rail (dim. 25 mm x 10 mm), standard.....	25
Stainless steel monitor carrier system for equipment rails (dim. 25 mm x 10 mm), according to customer requirements .....	26
Trays for supporting tubes (diam. = 30mm) .....	27
 <u>Universal modules: Cross-arm</u>	
Cross arm for supporting tube (various diams.).....	28 - 29
Cross-arms for supporting tubes (diam. = 30mm).....	30
Holding device for cross-arm .....	30
 <u>Universal modules: Infusion fittings / facilities</u>	
Infusion bottle holder for equipment rail (dim. 25 mm x 10mm), single handed operation.....	31
Infusion bottle holder for supporting tube (diam. = 30 mm), single handed operation .....	32
Infusion bottle holder for supporting tubes (various diams.).....	33 - 35
Infusion bottle holders for supporting tubes (diam. = 30 mm) .....	36
Safety bottle cross holder for supporting tube (various diams.) .....	36
Stainless steel infusion bottle holder (supporting tube diam. = 25 mm).....	37
Stainless steel infusion bottle holder (supporting tube diam. = 25 mm), single handed operation.....	38
Holding device for infusion bottle holder (supporting tube diam. = 25 mm) .....	38 - 39
Holding device for drip glass .....	39
Drip glass .....	39



## Table of contents

### Universal modules: Separators

Page

Aluminium (anodized) bed separator (telescopic tube) .....	40
Holding device for bed separator (telescopic tube).....	41
Curtain rings .....	41
Curtain for bed separator, made from highly fire resistant Trevira® CS.....	42

### Universal modules: Containers

Stainless steel catheter holder.....	43 - 44
Catheter rinsing vessel, complete set.....	45
Catheter rinsing vessel, individual components as replacements .....	45
Stainless steel wire catheter basket.....	46
Gloves basket .....	46
Waste bowl .....	46
Stainless steel wire sterile supplies basket.....	47
Waste collector to accommodate discard bags .....	48
Stainless steel holder for discard bag.....	48

### Universal modules: Cable management

Tube and cable holder for supporting tube (diam. = 30 mm).....	49
Tube and cable holder for equipment rail (dim. 25 mm x 10 mm) .....	49
Tube holder for equipment rail (dim. 25 mm x 10 mm).....	50
Cable holder for equipment rail (dim. 25 mm x 10 mm).....	50
Articulated arms with flexible shaft, bright chrome finish .....	51
Holding device for articulated arm .....	52
Plastic tube holding clips .....	53

### Universal modules: Electrical engineering

Halogen lamp, D <sup>med</sup> ® hx 35 P FX , with sprung articulated arm .....	54
Halogen lamp, D <sup>med</sup> ® halux Two 35/35 P FX, with sprung articulated arm.....	55
LED lamp D <sup>med</sup> ® halux LED 20 P LX with friction articulated arm.....	56
Holding device for lamps.....	57
Socket outlet boards, safety sockets at 45° .....	58

# Table of contents

## Universal modules: Gas supply

Page

Flow-meter, completely adjustable.....	59
Replacement parts for flow-meter .....	60
Aerosol atomiser .....	60
Bubble humidifier .....	60
Supply glass (screw closure) for aerosol atomiser and bubble humidifier .....	60
Secretion collection glasses (screw closure) with overflow protection.....	61
Collection glass (screw closure as replacement) .....	61
Supporting frame for secretion collection glass.....	62
Secretion collection glass as a safety item (screw closure) with overflow protection.....	62
Collection glass (screw closure) as replacement .....	62
Secretion collection glass (bayonet closure) with overflow protection .....	63
Collection glass (bayonet) as replacement .....	63
Compressed air injector with rapid closure valve, low noise .....	64
Vacuum regulator valve .....	64 - 65
Connection tubes .....	65
Tube adapter .....	66
Suction set .....	67
Silicon tube .....	67
Plastic bacteria filter.....	67
Plastic fingertip.....	67
Stainless steel bacteria filter housing .....	68
Accessories and replacement parts for stainless steel bacteria filter housing .....	68
Outlet plug connector for medical gases.....	69

## Universal modules: Monitor carrier arms

Monitor support arms, single arm, swivelling (Vesa 75/100 adapter) .....	70
Monitor carrier arm, single arm, swivelling (Vesa 75/100 adapter, Philips adapter or 5" insertion element) .....	71
Monitor carrier arm, double arm, swivelling (Vesa 75/100 adapter, Philips adapter or 5" insertion element) .....	72
Monitor carrier arm, single arm, adjustable height, swivelling (Vesa 75/100 adapter, Philips adapter or 5" insertion element) .....	73
Monitor carrier arm, double arm, adjustable height and swivelling (Vesa 75/100 adapter, Philips adapter or 5" insertion element) .....	74
Monitor carrier arm with keyboard shelf, single arm, adjustable for height and swivelling (Vesa 75/100 adapter).....	75

## Universal modules: Assembly aid

Suction lifting tool, rubber.....	76
-----------------------------------	----

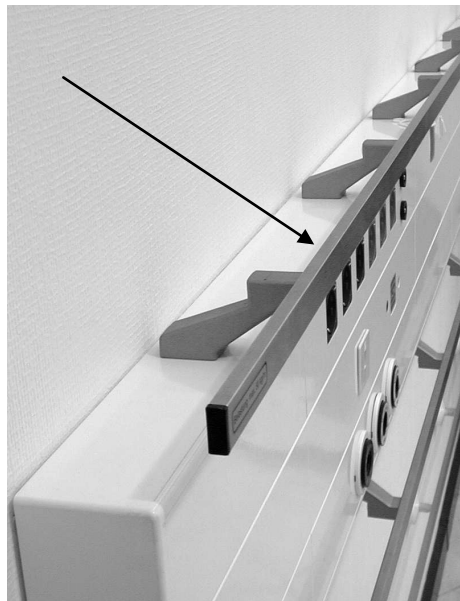
### Equipment rails (dim. 25 mm x 10 mm) as per DIN EN ISO 19054

mounted above and/or below an IV 1054, length\* project specific

**Stainless steel equipment rail, incl. glass-fibre reinforced plastic holder and end caps, separation between holders = 400 mm:**

<u>Protrusion</u>	<u>Weight / m</u>	<u>Load / m</u>
40 mm	1.1 kg	max. 50 kg

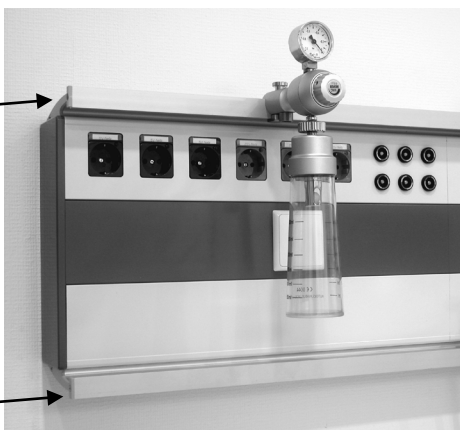
**Item no.: 1054-006-□□□□**



**Aluminium equipment rail, incl. side cover:**

<u>Protrusion</u>	<u>Weight / m</u>	<u>Load / m</u>
35 mm	1.1 kg	max. 50 kg

**Item no.: 1054-017-□□□□**



▼ Accessory suitable for equipment rail:

- Stainless steel carrier system for equipment rail, from side 25
- Supporting tubes for fitting to equipment rails, from side 23

\* The length of the equipment rail is entered in the free spaces, e.g.: 1054-006-0800 for an equipment rail of 800 mm length.

### Stainless steel supporting tubes

Fitted on the side of an IVV 1054, length\* project specific, incl. two holding devices (the separation between the holding devices is project specific)

**Supporting tube (diam. = 30 mm) fixed, incl. holding devices (top and bottom, inclined forwards by 45°) and end caps:**

Protrusion

150 mm

Load

max. 40 kg

**Item no.: 0421-002.03-□□□□**

**Supporting tube (diam. = 25 mm) fixed, incl. holding devices (top and bottom, inclined forwards by 45°) and end caps:**

Protrusion

150 mm

Load

max. 40 kg

**Item no.: 0421-004-□□□□**



**Supporting tube (diam. = 30 mm) swivelling, incl. holding devices (top and bottom) and end caps:**

Protrusion

200 mm

Load

max. 40 kg

**Item no.: 0446-001-□□□□ \_\_\_\_\_ (right-hand side)**

**Item no.: 0446-001.02-□□□□ \_\_\_\_\_ (left-hand side)**

**Supporting tube (diam. = 38 mm) swivelling, incl. holding devices (top and bottom) and end caps:**

Protrusion

200 mm

Load

max. 40 kg

**Item no.: 0446-001.07-□□□□ \_\_\_\_\_ (right-hand side)**

**Item no.: 0446-001.06-□□□□ \_\_\_\_\_ (left-hand side)**



▼ Accessory suitable for supporting tubes:

- Trays for supporting tubes, from Page 27
- Cross-arms and infusion bottle holders, from Page 28

\* The length of the supporting tube is entered in the free spaces of the item no., e.g.: 0446-001-1000 for a supporting tube of 1,000 mm length.

Stainless steel supporting tube

Fitted on the side of an MEV 8000, length\* project specific, incl. two holding devices (the separation between the holding devices is project specific)

**Supporting tube (diam. = 30 mm) swivelling, incl. holding devices (top and bottom) and end caps:**

<u>Protrusion</u>	<u>Load</u>
140 mm	max. 40 kg

**Item no.: 0425-001-□□□□ \_\_\_\_\_(right-hand side)**

**Item no.: 0425-001.02-□□□□ \_\_\_\_\_(left-hand side)**

- ▼ Accessory suitable for **supporting tube**:
- Trays for supporting tubes, from Page 27
  - Cross-arms and infusion bottle holders, from Page 28

\* The length of the supporting tube is entered in the free spaces of the item no., e.g.: 0425-001-1000 for a supporting tube of 1,000 mm length.

### Stainless steel supporting tubes

Fitted inside a VIP 2000 or VIP 2001, incl. holding device

#### Supporting tube (diam. = 30 mm), swivelling.

<u>Protrusion</u>	<u>Load</u>	<u>Length of supporting tube</u>
approx. 145 mm	max. 10 kg	approx. 400 mm

Item no.: 2001-007.03 (right-hand side)

Item no.: 2001-007.04 (left-hand side)

#### Supporting tube (diam. = 30 mm), swivelling, with stainless steel telescopic tube (diam. = 20 mm), max. downwards withdrawal, 400 mm:

<u>Protrusion</u>	<u>Load</u>	<u>Length of supporting tube + telescopic tube</u>
approx. 145 mm	max. 10 kg	approx. 800 mm

Item no.: 2001-005.03 (right-hand side)

Item no.: 2001-005.04 (left-hand side)

Suitable accessories: - Cross arm for telescopic tube (diam. = 20 mm), folding, see below



Item no.: 2001-005.04

#### ▼ Accessory suitable for **stainless steel supporting tube** (diam. = 30 mm):

- Infusion bottle holder (Item no.: 2001-028.02), Page 36

### Cross-arm for telescopic tube (diam. = 20mm), folding

#### Cross-arm, with stainless steel equipment rail (dim. 25 mm x 10 mm) (incl. end caps) and holding device:

<u>Protrusion</u>	<u>Weight</u>	<u>Load</u>
280 mm	0.4 kg	max. 5 kg

Item no.: 2001-016



Application example

### Equipment rail pair (dim. 25 mm x 10 mm) as per DIN EN ISO 19054

fitted on the side facing towards the OP table (two equipment rails one above the other), Length\* project-specific

**Aluminium equipment rails, for fitting equipment and infusion trolleys GW 3600 / IW 3600, anodized natural colour, incl. end caps:**

<u>Weight / m</u>	<u>Load / m</u>	<u>Separation, middle of rails</u>
1.2 kg	max. 50 kg	115 mm

**Item no.: 3700-005.05-□□□□**

**Aluminium equipment rails incl. curve piece, for fitting surrounding equipment and infusion trolleys GW 3600-SUF / IW 3600-SUF, anodized natural colour, incl. end caps:**

<u>Weight / m</u>	<u>Load / m</u>	<u>Separation, middle of rails</u>
1.2 kg	max. 50 kg	115 mm

**Item no.: 3700-005.06-□□□□x□□□□** \_\_\_\_\_ L-shape

**Item no.: 3700-005.07-□□□□x□□□□** \_\_\_\_\_ U-shape



**Item no.: 3700-005.07**

\* The length of the equipment rail is entered in the free spaces, e.g.: 3700-005.06-2500x2500 for an equipment rail of 2500 mm x 2500 mm length.

### Equipment rail (dim. 25 mm x 10 mm) as per DIN EN ISO 19054

fitted on the side facing away from the OP table, length\* project-specific

**Aluminium equipment rail, anodized natural colour, incl. end caps:**

<u>Weight / m</u>	<u>Load / m</u>
1.2 kg	max. 50 kg

**Item no.: 3700-005.08-□□□□**

**Stainless steel equipment rail, incl. end caps:**

<u>Weight / m</u>	<u>Load / m</u>
1.2 kg	max. 50 kg

**Item no.: 3700-005.09-□□□□**



**Item no.: 3700-005.09**

\* The length of the equipment rail is entered in the free spaces, e.g.: 3700-005.08-2500 for an equipment rail of 2500 mm length.

Stainless steel supporting bolts

for fitting a Plexiglas skirt, the arrangement of the bolts is project specific

Supporting bolts:

<u>Weight</u>	<u>Load</u>	<u>Length</u>	<u>Diameter</u>
25 g	5 kg	36 mm	17 mm

Item no.: 3600-015-005



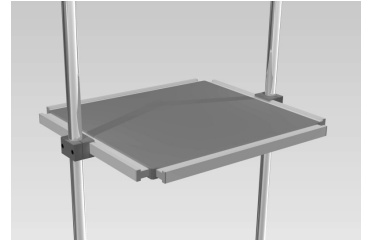
### Aluminium consoles (electrostatically powder coated)

for fitting between two supporting tubes (diam. = 30mm, separation = 595 mm), fully vertically and horizontally adjustable, incl. two holding devices

#### Aluminium console with four equipment rails (dim. 25 mm x 10 mm):

<u>Overall dim. (W x D)</u>	<u>Footprint (W x D)</u>	<u>Weight</u>	<u>Load</u>
560 mm x 510 mm	500 mm x 450 mm	approx. 5.5 kg	max. 40 kg

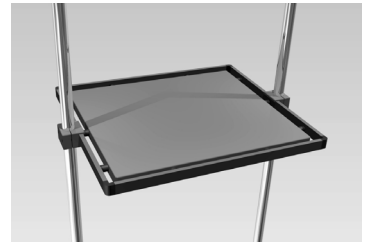
Item no.: 0255-013.13



#### Stainless steel console with surrounding equipment rail (dim. 25 mm x 10 mm):

<u>Overall dim. (W x D)</u>	<u>Footprint (W x D)</u>	<u>Weight</u>	<u>Load</u>
560 mm x 510 mm	500 mm x 450 mm	approx. 5.5 kg	max. 40 kg

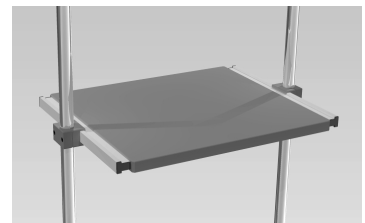
Item no.: 0255-006.04



#### Aluminium console with two side equipment rails (dim. 25 mm x 10 mm):

<u>Overall dim. (W x D)</u>	<u>Footprint (W x D)</u>	<u>Weight</u>	<u>Load</u>
560 mm x 450 mm	500 mm x 450 mm	approx. 5.5 kg	max. 40 kg

Item no.: 0255-013.10



#### ▼ Accessory suitable for **aluminium consoles**:

- Drawer module (Item no.: 0121-005 / Item no: 0121-005.02), Page 20
- Keyboard module (Item no.: 0106-007), Page 21
- Writing tray (Item no.: 0261-001), Page 21

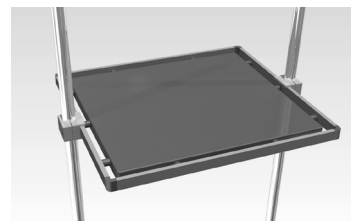
### Stainless steel consoles

for fitting between two supporting tubes (diam. = 30mm, separation = 595 mm), fully vertically and horizontally adjustable, incl. two holding devices

#### Stainless steel console with surrounding equipment rail (dim. 25 mm x 10 mm):

<u>Overall dim. (W x D)</u>	<u>Footprint (W x D)</u>	<u>Weight</u>	<u>Load</u>
560 mm x 510 mm	500 mm x 450 mm	approx. 5.5 kg	max. 40 kg

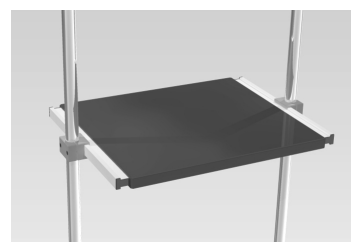
Item no.: 0255-006.02



#### Aluminium console with two side equipment rails (dim. 25 mm x 10 mm):

<u>Overall dim. (W x D)</u>	<u>Footprint (W x D)</u>	<u>Weight</u>	<u>Load</u>
560 mm x 450 mm	500 mm x 450 mm	approx. 5.5 kg	max. 40 kg

Item no.: 0255-013



#### ▼ Accessory suitable for **stainless steel consoles**:

- Drawer module (Item no.: 0121-005 / Item no: 0121-005.02), Page 20
- Keyboard module (Item no.: 0106-007), Page 21
- Writing tray (Item no.: 0261-001), Page 21

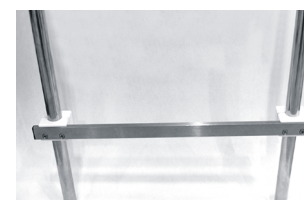
### Equipment rails (dim. 25 mm x 10 mm) as per DIN EN ISO 19054, horizontal

for fitting between two supporting tubes (diam. = 30 mm, separation = 595 mm), fully vertically adjustable, incl. two holding devices

#### Stainless steel equipment rail, incl. end caps:

<u>Overall dim. (W x H)</u>	<u>Usable length</u>	<u>Weight</u>	<u>Load</u>
665 mm x 35 mm	535 mm	approx. 1 kg	max. 30 kg

Item no.: 0407-008



#### Pair of stainless steel equipment rails, incl. end caps:

<u>Overall dim. (W x H)</u>	<u>Usable length</u>	<u>Weight</u>	<u>Load / Rail</u>
665 mm x 35 mm	2 x 535 mm	approx. 1.4 kg	max. 15 kg

Item no.: 0407-009



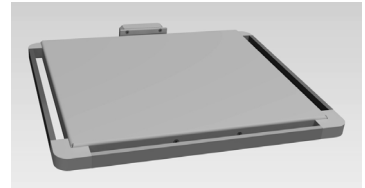
### Aluminium consoles (electrostatically powder coated)

for front mounting, completely vertically adjustable, incl. screw-in holders

#### Stainless steel console with three equipment rails (dim. 25 mm x 10 mm):

<u>Overall dim. (W x D)</u>	<u>Footprint (W x D)</u>	<u>Weight</u>	<u>Load</u>
550 mm x 475 mm	500 mm x 450 mm	approx. 6 kg	max. 40 kg

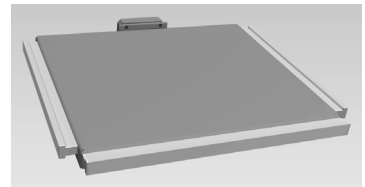
Item no.: 2500-083



#### Aluminium console with three equipment rails (dim. 25 mm x 10 mm):

<u>Overall dim. (W x D)</u>	<u>Footprint (W x D)</u>	<u>Weight</u>	<u>Load</u>
560 mm x 475 mm	500 mm x 450 mm	approx. 6 kg	max. 40 kg

Item no.: 2500-020.06



#### ▼ Accessory suitable for aluminium console:

- Drawer module (Item no.: 0121-005 / Item no: 0121-005.02), Page 20
- Keyboard module (Item no.: 0106-007), Page 21
- Writing tray (Item no.: 0261-001), Page 21

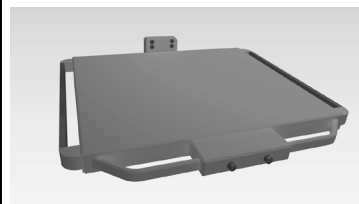
### Aluminium consoles (electrostatically powder coated) with control element for pneumatic brakes

front mounted (position project dependent), incl. screw-in holders

#### Aluminium console with two side equipment rails (dim. 25 mm x 10 mm):

<u>Overall dim. (W x D)</u>	<u>Footprint (W x D)</u>	<u>Weight</u>	<u>Load</u>
550 mm x 475 mm	500 mm x 460 mm	6 kg	max. 40 kg

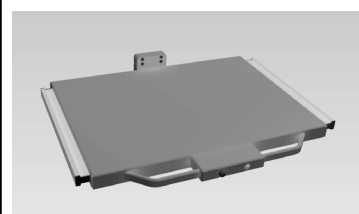
Item no.: 2500-091.02



#### Aluminium console with two side equipment rails (dim. 25 mm x 10 mm):

<u>Overall dim. (W x D)</u>	<u>Footprint (W x D)</u>	<u>Weight</u>	<u>Load</u>
560 mm x 475 mm	500 mm x 450 mm	6 kg	max. 40 kg

Item no.: 2500-019.08



#### ▼ Accessory suitable for **aluminium console**:

- Drawer module (Item no.: 0121-005 / Item no: 0121-005.02), Page 20
- Keyboard module (Item no.: 0106-007), Page 21
- Writing tray (Item no.: 0261-001), Page 21

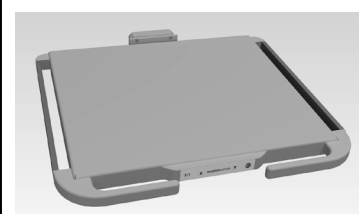
### Aluminium console (electrostatically powder coated) with membrane switch

for front mounting, completely vertically adjustable, incl. screw-in holders

#### Aluminium console with two side equipment rails (dim. 25 mm x 10 mm):

<u>Overall dim. (W x D)</u>	<u>Footprint (W x D)</u>	<u>Weight</u>	<u>Load</u>
550 mm x 475 mm	500 mm x 460 mm	6 kg	max. 40 kg

Item no.: 2500-090.03



#### ▼ Accessory suitable for **aluminium console**:

- Drawer module (Item no.: 0121-005 / Item no: 0121-005.02), Page 20
- Keyboard module (Item no.: 0106-007), Page 21
- Writing tray (Item no.: 0261-001), Page 21

### Operating handle with actuating elements for pneumatic braking

(position project-dependent)

Operating handle, front mounted:

Item no.: 2500-017.03 \_\_\_\_\_ for BSP 2500

Item no.: 2600-005 \_\_\_\_\_ for BSP 2600



Operating handle for BSP 2600

### Equipment rail pair (dim. 25 mm x 10 mm) as per DIN EN ISO 19054, vertical

fitted to a base support head, length project-dependent

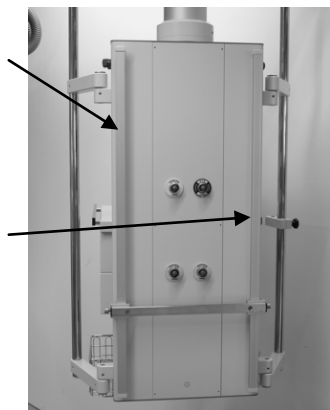
Aluminium equipment rails, anodized natural colour, incl. end caps:

Weight / m per rail  
1.2 kg

Load / m per rail  
max. 50 kg

Item no.: 2500-026.04-□□□□ \_\_\_\_\_ for BSP 2500

Item no.: 2600-017-□□□□ \_\_\_\_\_ for BSP 2600



BSP 2500 with pair of equipment rails

▼ Accessory suitable for pair of equipment rails:

- Equipment rail (dim. 25 mm x 10 mm) as per DIN EN ISO 19054, rear, Page 18

\* The length of the equipment rail is entered in the free spaces, e.g.: 3700-005.02-0800 for an equipment rail of 800 mm length.

### Stainless steel supporting tube (diam. 30 mm), swivelling

Fitted on the side, length\* project specific, incl. two holding devices (the separation between the holding devices is project specific)

#### Supporting tube, incl. end caps

<u>Protrusion</u>	<u>Load</u>
200 mm	max. 40 kg

Item no.: 2500-021-□□□□ \_\_\_\_\_ (left-hand side)

Item no.: 2500-021.03-□□□□ \_\_\_\_\_ (right-hand side)

\* The length of the supporting tube is entered in the free spaces of the item no., e.g.: 2500-021-1000 for a supporting tube of 1000 mm length.



#### ▼ Accessory suitable for **supporting tube**:

- Cross-arms and infusion bottle holders, from Page 28

### Equipment rail (dim. 25 mm x 10 mm) as per DIN EN ISO 19054, rear

for fitting to a pair of equipment rails, completely adjustable for height

#### Stainless steel equipment rail for BSP 2500, incl. two holding devices and end caps:

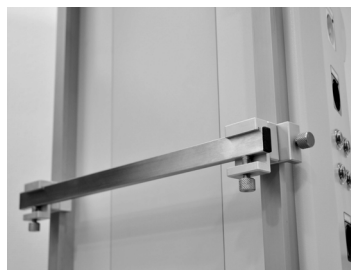
<u>Length</u>	<u>Load</u>
440 mm	max. 5 kg

Item no.: 2500-026.03

#### Stainless steel equipment rail for BSP 2600, incl. two holding devices and end caps:

<u>Length</u>	<u>Load</u>
450 mm	max. 5 kg

Item no.: 2500-017.01



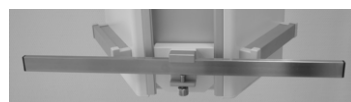
### Equipment rail (dim. 25 mm x 10 mm) as per DIN EN ISO 19054, front

for fitting to base support head, completely adjustable for height, incl.

#### Stainless steel equipment rail, incl. holding devices and end caps:

<u>Length</u>	<u>Load</u>
500 mm	max. 5 kg

Item no.: 2500-030.05



### Docking trolley, mobile

for taking medical equipment (such as respiration devices), incl. single-handed towing bar and anti-static double steering rollers (two rollers with brake)

**Docking trolley with stainless steel tray, drawer module and two side equipment rails (dim. 25 mm x 10 mm):**

Overall dim. (H x W x D)

730 mm x 615 mm x 700 mm

Footprint (W x D)

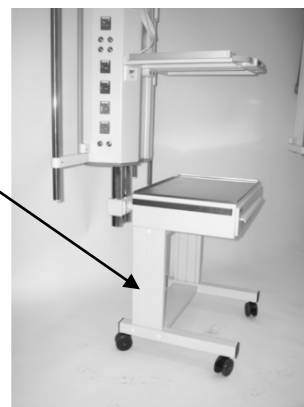
approx. 600 mm x 430 mm

Total load

max. 40 kg

**Item no.: 0126-003**

▼ Suitable accessories: - Docking equipment for BSP, see below



### Docking trolley for various applications, mobile

for taking medical equipment (such as respiration devices), incl. single-handed towing bar and anti-static apparatus rollers (two rollers with brake)

**Docking trolley, optionally with several stainless steel trays and/or drawer modules (design project specific), maximum height = 1400 mm:**

Overall dim. (H x W x D)

variable x 630 mm x 650 mm

Footprint (W x D)

approx. 450 mm x 540 mm

Load / console

max. 40 kg

Total load

max. 200 kg

**Item no.: 0130-000**

▼ Suitable accessories: - Docking equipment, see below



**Assembly example**

### Docking equipment

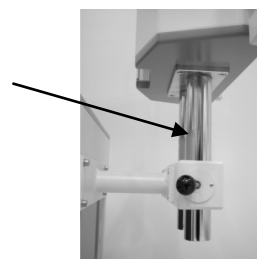
fitted below BSP systems

**Stainless steel docking equipment:**

Weight

2.9 kg

**Item no.: 2500-045-004**



### Drawer module with self closing device and soft closing

Stainless steel housing (electrostatically powder coated), for fitting below consoles or bearer systems (up to three drawer modules can be fitted, project specific), with removable plastic compartment for easy cleaning.

#### Drawer module with closed drawer front, small:

<u>Width</u>	<u>Height</u>	<u>Depth</u>	<u>Weight</u>
400 mm	130 mm	280 mm	approx. 6 kg

**Item no.: 0101-005**

#### Drawer module with closed drawer front, large:

<u>Width</u>	<u>Height</u>	<u>Depth</u>	<u>Weight</u>
500 mm	135 mm	430 mm	approx. 6.5 kg

**Item no.: 0121-005**



#### drawer module with front opening for cable input, small:

<u>Width</u>	<u>Height</u>	<u>Depth</u>	<u>Weight</u>
400 mm	130 mm	280 mm	approx. 6 kg

**Item no.: 0101-003**

#### drawer module with front opening for cable input, large:

<u>Width</u>	<u>Height</u>	<u>Depth</u>	<u>Weight</u>
500 mm	135 mm	430 mm	approx. 6.5 kg

**Item no.: 0121-004.02**

**As item no.: 0101-005 and  
item no: 0121-005, only with  
front opening**



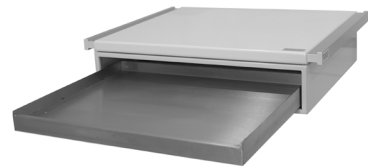
### Keyboard module with pull-out keyboard shelf

Stainless steel housing (electrostatically powder coated) for fitting below console or drawer

#### Keyboard module with stainless steel keyboard tray:

<u>Width</u>	<u>Height</u>	<u>Depth</u>	<u>Weight</u>
500 mm	100 mm	430 mm	approx. 8 kg

Item no.: 0106-007



Keyboard module fitted below a console

---

### Writing tray, pull-out

for fitting below consoles, carrier systems or drawers, suitable for DIN A3

#### HPL high pressure laminate writing tray:

<u>Width</u>	<u>Height</u>	<u>Depth</u>	<u>Weight</u>
500 mm	30 mm	430 mm	approx. 6 kg

Item no.: 0261-001



Writing tray fitted below a drawer block

### Equipment rails (dim. 25 mm x 10 mm) as per DIN EN ISO 19054, for wall fitting

Length project-specific (maximum length = 5,000 mm), incl. end caps, covering rosettes and supporting bolts (incl. 1 x supporting bolt for potential equaliser connection)

**Stainless steel equipment rail, incl. fixing accessories for fitting to a lightweight construction wall:**

<u>Protrusion</u>	<u>Weight / m</u>	<u>Separation between</u>	<u>Load / m</u>
55 mm	approx. 1.4 kg	<u>supporting bolts</u>	

Item no.: 0503-001-□□□□ \_\_\_\_ 400 mm \_\_\_\_ max. 50 kg

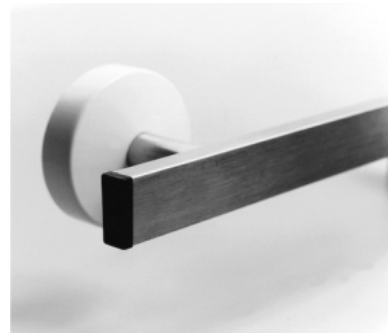
Item no.: 0503-001.02-□□□□ \_\_\_\_ 300 mm \_\_\_\_ max. 100 kg

**Stainless steel equipment rail, incl. fixing accessories\*\* for fitting to a solid wall:**

<u>Protrusion</u>	<u>Weight / m</u>	<u>Separation between</u>	<u>Load / m</u>
55 mm	approx. 1.4 kg	<u>supporting bolts</u>	

Item no.: 0503-002-□□□□ \_\_\_\_ 400 mm \_\_\_\_ max. 50 kg

Item no.: 0503-002.02-□□□□ \_\_\_\_ 300 mm \_\_\_\_ max. 100 kg



Covering rosettes are supplied as standard in white, but are available in black at customer request.

\* The length of the equipment rail is entered in the free spaces, e.g.: 0503-001-0800 for an equipment rail of 800 mm length.

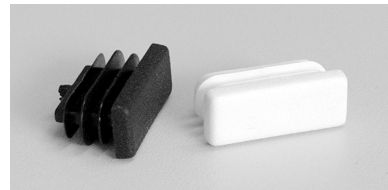
\*\* Fitting accessories are project-specific, and must suit the particular construction.

### End caps for stainless steel equipment rail (dim. 25 mm x 10 mm)

**Plastic end caps:**

Item no.: 0094-1060 \_\_\_\_ black

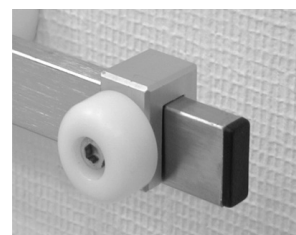
Item no.: 0094-1062 \_\_\_\_ white



### Travel limiter

**Travel limiter with plastic stop for fitting to an equipment rail (dim. 25 mm x 10 mm):**

Item no.: 4502-024



### Supporting tubes for fitting to equipment rails (dim. 25 mm x 10mm)

completely adjustable for height and horizontally, for fitting pumps and perfusors, infusion bottle holders and accessory cross-arms, length\* project-specific

**Stainless steel supporting tube for fitting to two equipment rails (dim. 25 mm x 10 mm) of the same wall distance, incl. two holding devices:**

<u>Protrusion</u>	<u>Load</u>	<u>Supporting tube</u>
180 mm	max. 40 kg	

Item no.: 0433-010-□□□□ \_\_\_\_\_ diam. = 30 mm

Item no.: 0433-010.01-□□□□ \_\_\_\_\_ diam. = 38 mm

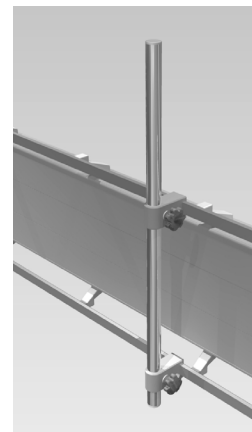


**Stainless steel supporting tube for fitting to two equipment rails (dim. 25 mm x 10mm) of the same wall distance, incl. two holding devices:**

<u>Protrusion</u>	<u>Load</u>	<u>Supporting tube</u>
60 mm	max. 15 kg	

Item no.: 0433-010.02-□□□□ \_\_\_\_\_ diam. = 30 mm

Item no.: 0433-010.04-□□□□ \_\_\_\_\_ diam. = 38 mm



**Stainless steel supporting tube for fitting to two equipment rails (dim. 25 mm x 10mm) of different wall distance, one holding device adjustable:**

<u>Protrusion</u>	<u>Load</u>	<u>Supporting tube</u>
60 mm	max. 15 kg	

Item no.: 0433-009.03-□□□□ \_\_\_\_\_ diam. = 30 mm

Item no.: 0433-009.05-□□□□ \_\_\_\_\_ diam. = 38 mm



▼ **Accessory suitable for universal supporting tube:**

- Cross-arms and infusion bottle holders, from Page 28

\* The length of the supporting tube is entered in the free spaces of the item no., e.g.: 0433-010-0800 for a supporting tube with a length of 800 mm.

### Supporting tubes for fitting to supporting tubes

for fitting of pumps and perfusors, infusion bottles and accessory cross-arms, length\* project-specific, adjustable for swivel and height

**Stainless steel supporting tube (diam. = 30 mm), incl. two supporting devices (to fit a 30 mm diam. supporting tube):**

Protrusion

200 mm

Weight

varies

Load

max. 40 kg

**Item no.: 0404-004-□□□□**

**Stainless steel supporting tube (diam. = 25 mm), incl. two supporting devices (to fit a 25 mm diam. supporting tube):**

Protrusion

200 mm

Weight

varies

Load

max. 40 kg

**Item no.: 0404-014.02-□□□□**



▼ Accessory suitable for **supporting tubes**:

- Cross-arms and infusion bottle holders, from Page 28

\* The length of the supporting tube is entered in the free spaces of the item no., e.g.: 0404-004-0800 for a supporting tube of 800 mm length.

### Stainless steel monitor carrier system for equipment rail (dim. 25 mm x 10 mm), standard

incl. two fixing claws and two adjustable wall distance keepers (adjustable up to max. 100 mm wall distance)

#### Small monitor carrier system, incl. edge protection:

<u>Width</u>	<u>Depth</u>	<u>Load</u>	<u>Weight</u>
470 mm	360 mm	max. 40 kg	approx. 5 kg

Item no.: 9310-4736

#### Large monitor carrier system, incl. edge protection:

<u>Width</u>	<u>Depth</u>	<u>Load</u>	<u>Weight</u>
540 mm	360 mm	max. 40 kg	approx. 5 kg

Item no.: 9310-5436

#### Extra large monitor carrier system, incl. edge protection:

<u>Width</u>	<u>Depth</u>	<u>Load</u>	<u>Weight</u>
540 mm	460 mm	max. 40 kg	approx. 5 kg

Item no.: 9310-5446



#### Monitor carrier system\* with drawer block\*\*, powder coated:

<u>Load</u>	<u>Weight</u>
max. 40 kg	approx. 12 kg

Item no.: 9310-□□□□.1



#### Monitor carrier system\* with double drawer block\*\*, powder coated:

<u>Load</u>	<u>Weight</u>
max. 40 kg	approx. 19 kg

Item no.: 9310-□□□□.2



\* The missing part of the item no. is completed with the second part of the item no. of the monitor carrier system required.  
(Small monitor carrier system = 4736 / Large monitor carrier system = 5436 / Extra large monitor carrier system 5446).

\*\* Standard version with complete pull-out (without self closing device and soft closing)

#### Drawer dimensions:

<u>Width, internal</u>	<u>Depth, internal</u>	<u>Height, internal</u>	<u>Weight</u>
420 mm	310 mm	80 mm	approx. 7 kg

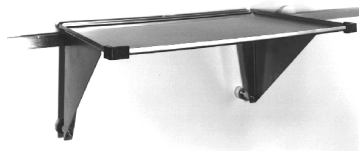
### Stainless steel monitor carrier system for equipment rails (dim. 25 mm x 10 mm), according to customer requirements

incl. two fixing claws and two adjustable wall distance keepers (adjustable to a maximum of 60 mm wall distance), distance from centre of equipment rail to wall distance keeper = 185 mm

#### Monitor carrier system, incl. edge protection:

<u>Width*</u>	<u>Depth*</u>	<u>Load</u>
min. 450 mm	min. 330 mm	max. 40 kg
max. 500 mm	max. 400 mm	

Item no.: 0207-001-0□□□x0□□□



#### Monitor carrier system, incl. drawer module (Item no.: 0101-005) and edge protection:

<u>Width*</u>	<u>Depth*</u>	<u>Load</u>
min. 450 mm	min. 330 mm	max. 40 kg
max. 500 mm	max. 400 mm	

Item no.: 0207-007-0□□□x0□□□



#### Monitor carrier system, incl. drawer module with front opening for cable inlet (Item no: 0101-005.02) and edge protection:

<u>Width*</u>	<u>Depth*</u>	<u>Load</u>
min. 450 mm	min. 330 mm	max. 40 kg
max. 500 mm	max. 400 mm	

Item no.: 0207-006-0□□□x0□□□



#### ▼ Accessory suitable for **stainless steel monitor carrier system**:

- Drawer module (Item no.: 0101-005 / Item no: 0101-005.02), Page 20

\* The missing part of the item no. is completed with the width and depth of the monitor carrier system, e.g.: 0207-001-0450x0330 for a monitor carrier system with dimensions: Width = 450 mm and Depth = 330 mm

### Trays for supporting tubes (diam. = 30mm)

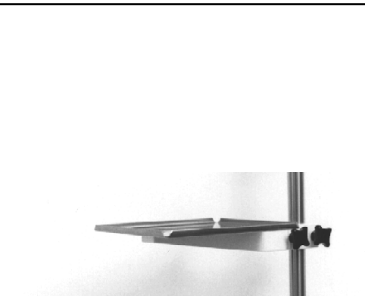
completely adjustable for height and swivelling

#### Stainless steel tray, incl. holding devices:

<u>Width*</u>	<u>Depth*</u>	<u>Load</u>
min. 250 mm	min. 250 mm	max. 5 kg
max. 350 mm	max. 350 mm	

Item no.: 0225-003.02-0□□□x0□□□

\* The missing part of the item no. is completed with the width and depth of the tray, e.g.: 0225-003.02-0250x0350 for a tray with dimensions: Width = 250 mm and Depth = 350 mm



#### Stainless steel tray, swivelling, incl. holding devices:

<u>Width*</u>	<u>Depth*</u>	<u>Load</u>
min. 400 mm	min. 400 mm	max. 15 kg
max. 500 mm	max. 500 mm	

Item no.: 0226-005.02-0□□□x0□□□

\* The missing part of the item no. is completed with the width and depth of the tray, e.g.: 0226-005.02-0400x0450 for a tray with dimensions: Width = 400 mm and Depth = 450 mm



#### Swivelling tray, incl. drawer module (Item no: 0101-005) and holding devices:

<u>Width</u>	<u>Depth</u>	<u>Load</u>
400 mm	400 mm	max. 15 kg

Item no.: 0226-001.09



#### Swivelling tray, incl. drawer module (Item no: 0121-005) and holding devices:

<u>Width</u>	<u>Depth</u>	<u>Load</u>
500 mm	450 mm	max. 15 kg

Item no.: 0226-001.04



### Cross arm for supporting tube (various diams.)

completely adjustable for height and swivelling

**Cross-arm, with stainless steel equipment rail (dim. 25 mm x 10 mm) (incl. end cap):**

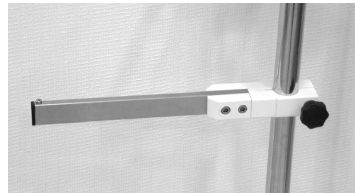
<u>Usable length*</u>	<u>Weight</u>	<u>Load</u>	<u>For supporting tube</u>
min. 150 mm	varies	max. 5 kg	
max. 350 mm			

**Item no.: 0312-001-0**     \_\_\_\_\_ diam. = 30 mm

**Item no.: 0312-001.01-0**     \_\_\_\_\_ diam. = 22 mm

**Item no.: 0312-001.02-0**     \_\_\_\_\_ diam. = 25 mm

**Item no.: 0312-001.03-0**     \_\_\_\_\_ diam. = 38 mm



**Cross-arm, U-shape, with two stainless steel equipment rails (dim. 25 mm x 10 mm) (incl. end cap):**

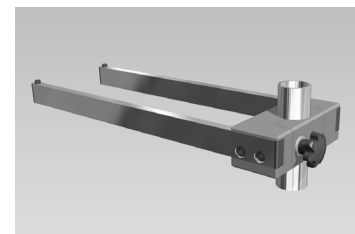
<u>Usable length*</u>	<u>Weight</u>	<u>Load</u>	<u>For supporting tube</u>
min. 150 mm	varies	max. 10 kg	
max. 350 mm			

**Item no.: 0437-005-0**    \_\_\_\_\_ diam. = 30 mm

**Item no.: 0437-005.01-0**    \_\_\_\_\_ diam. = 22 mm

**Item no.: 0437-005.02-0**    \_\_\_\_\_ diam. = 25 mm

**Item no.: 0437-005.03-0**    \_\_\_\_\_ diam. = 38 mm



**Double cross-arm, with two stainless steel equipment rails (dim. 25 mm x 10 mm) (incl. end caps), pivoting on supporting gudgeon (diam. = 20 mm), incl. holding device:**

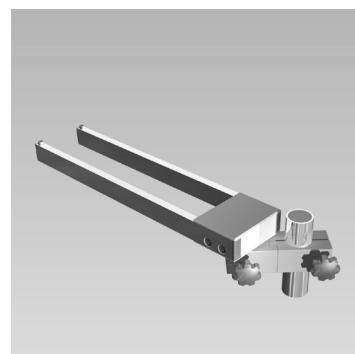
<u>Usable length*</u>	<u>Weight</u>	<u>Load</u>	<u>For supporting tube</u>
min. 150 mm	varies	max. 10 kg	
max. 350 mm			

**Item no.: 0307-008-0**    \_\_\_\_\_ diam. = 30 mm

**Item no.: 0307-008.01-0**    \_\_\_\_\_ diam. = 22 mm

**Item no.: 0307-008.02-0**    \_\_\_\_\_ diam. = 25 mm

**Item no.: 0307-008.03-0**    \_\_\_\_\_ diam. = 38 mm



\* The missing part of the item no. is completed with the required usable length, e.g. 0312-001-0150 for a cross-arm with 150 mm usable length.



### Cross arm for supporting tube (various diams.)

completely adjustable for height and swivelling

**Cross-arm, T-shape, with stainless steel equipment rail (dim. 25 mm x 10 mm) (incl. end caps):**

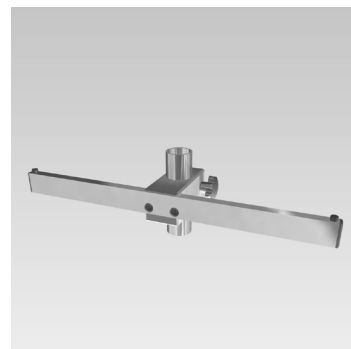
<u>Usable length: left / right*</u>	<u>Weight</u>	<u>Load</u>	<u>For supporting tube</u>
min. 150 mm / 150 mm	varies	max. 10 kg	
max. 350 mm / 350 mm			

Item no.: 0437-002-0□□□ \_\_\_\_\_ diam. = 30 mm

Item no.: 0437-002.01-0□□□ \_\_\_\_\_ diam. = 22 mm

Item no.: 0437-002.02-0□□□ \_\_\_\_\_ diam. = 25 mm

Item no.: 0437-002.03-0□□□ \_\_\_\_\_ diam. = 38 mm



**Cross-arm, double T-shape, with two stainless steel equipment rails (dim. 25 mm x 10 mm) (incl. end caps):**

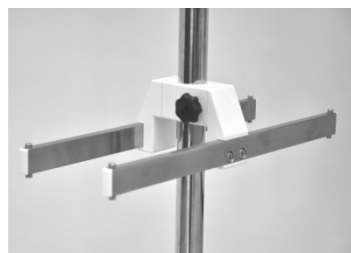
<u>Usable length: left / right*</u>	<u>Weight</u>	<u>Load</u>	<u>For supporting tube</u>
min. 150 mm / 150 mm	varies	max. 15 kg	
max. 350 mm / 350 mm			

Item no.: 0437-004-0□□□ \_\_\_\_\_ diam. = 30 mm

Item no.: 0437-004.01-0□□□ \_\_\_\_\_ diam. = 22 mm

Item no.: 0437-004.02-0□□□ \_\_\_\_\_ diam. = 25 mm

Item no.: 0437-004.03-0□□□ \_\_\_\_\_ diam. = 38 mm



**Compact cross-arm, consisting of holding device for stainless steel supporting tube (various diams.) and stainless steel cross-arm, with equipment rail (dim. 25 mm x 10 mm). Cross-arm, pivoting on gudgeon (diam. = 20 mm):**

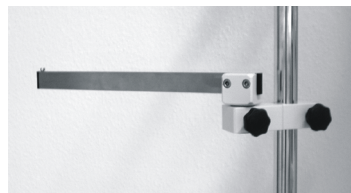
<u>Usable length*</u>	<u>Weight</u>	<u>Load</u>	<u>For supporting tube</u>
min. 150 mm	varies	max. 5 kg	
max. 350 mm			

Item no.: 0307-002-0□□□ \_\_\_\_\_ diam. = 30 mm

Item no.: 0307-002.01-0□□□ \_\_\_\_\_ diam. = 22 mm

Item no.: 0307-002.02-0□□□ \_\_\_\_\_ diam. = 25 mm

Item no.: 0307-002.03-0□□□ \_\_\_\_\_ diam. = 38 mm



\* The missing part of the item no. is completed with the required usable length, e.g. 0307-002-0150 for a cross-arm with 150 mm usable length.

## Universal modules: Cross-arm

### Cross-arms for supporting tubes (diam. = 30mm)

completely adjustable for height and swivelling

**Jointed cross-arm with two stainless steel equipment rails, equipped as per DN ISO 19054:**

Usable length

250 mm x 300 mm

Weight

approx. 1 kg

Load

max. 5 kg

**Item no.: 0301-001**



### Holding device for cross-arm

with drilling for supporting gudgeon (diam. = 20 mm)

**Holding device with removal safety device for fixing to a supporting tube (various diam.), adjustable height and swivelling:**

Protrusion:

60 mm

Weight

varies

Load

max. 5 kg

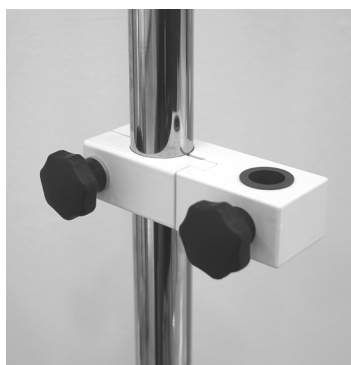
For supporting tube

**Item no.: 0307-003.05** \_\_\_\_\_ diam. = 30 mm

**Item no.: 0307-003.08** \_\_\_\_\_ diam. = 22 mm

**Item no.: 0307-003.09** \_\_\_\_\_ diam. = 25 mm

**Item no.: 0307-003.10** \_\_\_\_\_ diam. = 38 mm



### Infusion bottle holder for equipment rail (dim. 25 mm x 10mm), single handed operation

Single handed adjustable height by 300 mm

#### Stainless steel infusion bottle holder (4 x supporting hooks):

<u>Protrusion</u>	<u>Width</u>	<u>Weight</u>	<u>Load</u>
180 mm	450 mm	approx. 2 kg	max. 6 kg

Item no.: 9030-1184

#### Stainless steel infusion bottle holder (4 x supporting hooks):

<u>Protrusion</u>	<u>Width</u>	<u>Weight</u>	<u>Load</u>
100 mm	450 mm	approx. 2 kg	max. 6 kg

Item no.: 9030-1104



Item no.: 9030-1104

#### Stainless steel infusion bottle holder (6 x supporting hooks):

<u>Protrusion</u>	<u>Width</u>	<u>Weight</u>	<u>Load</u>
180 mm	600 mm	approx. 2 kg	max. 6 kg

Item no.: 9030-1186

#### Stainless steel infusion bottle holder (6 x supporting hooks):

<u>Protrusion</u>	<u>Width</u>	<u>Weight</u>	<u>Load</u>
100 mm	600 mm	approx. 2 kg	max. 6

Item no.: 9030-1106



Item no.: 9030-1106

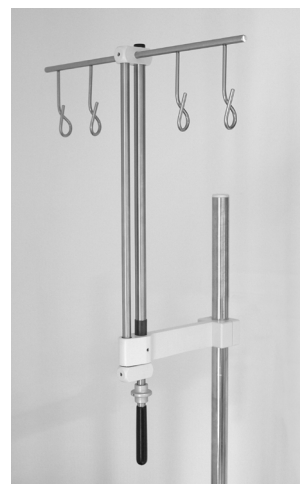
### Infusion bottle holder for supporting tube (diam. = 30 mm), single handed operation

Single handed adjustable height by 300 mm

Infusion bottle holder (4 x supporting hooks), for fitting to a supporting tube (diam. 30 mm):

<u>Protrusion</u>	<u>Width</u>	<u>Weight</u>	<u>Load</u>
180 mm	450 mm	2 kg	max. 6 kg

Item no.: 9030-2184



Infusion bottle holder (6 x supporting hooks), for fitting to a supporting tube (diam. 30 mm):

<u>Protrusion</u>	<u>Width</u>	<u>Weight</u>	<u>Load</u>
180 mm	600 mm	2 kg	max. 6 kg

Item no.: 9030-2186



### Infusion bottle holder for supporting tubes (various diam.)

completely adjustable for height and swivelling

#### Stainless steel infusion bottle holder (4 x supporting hooks):

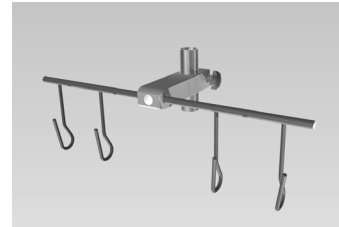
<u>Protrusion</u>	<u>Width</u>	<u>Weight</u>	<u>Load</u>	<u>For supporting tube</u>
100 mm	450 mm	varies	max. 6 kg	

Item no.: 0305-004.02 \_\_\_\_\_ diam. = 30 mm

Item no.: 0305-004.06 \_\_\_\_\_ diam. = 22 mm

Item no.: 0305-004.07 \_\_\_\_\_ diam. = 25 mm

Item no.: 0305-004.08 \_\_\_\_\_ diam. = 38 mm



Item no.: 0305-004.02

#### Stainless steel infusion bottle holder (6 x supporting hooks):

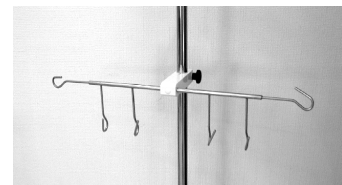
<u>Protrusion</u>	<u>Width</u>	<u>Weight</u>	<u>Load</u>	<u>For supporting tube</u>
100 mm	520 mm	varies	max. 6 kg	

Item no.: 0305-004 \_\_\_\_\_ diam. = 30 mm

Item no.: 0305-004.03 \_\_\_\_\_ diam. = 22 mm

Item no.: 0305-004.04 \_\_\_\_\_ diam. = 25 mm

Item no.: 0305-004.05 \_\_\_\_\_ diam. = 38 mm



Item no.: 0305-004

#### Stainless steel infusion bottle holder (6 x supporting baskets):

<u>Protrusion</u>	<u>Width</u>	<u>Weight</u>	<u>Load</u>	<u>For supporting tube</u>
100 mm	620 mm	varies	max. 6 kg	

Item no.: 0305-002 \_\_\_\_\_ diam. = 30 mm

Item no.: 0305-002.03 \_\_\_\_\_ diam. = 22 mm

Item no.: 0305-002.04 \_\_\_\_\_ diam. = 25 mm

Item no.: 0305-002.05 \_\_\_\_\_ diam. = 38 mm



### Infusion bottle holder for supporting tubes (various diam.)

completely adjustable for height and swivelling

#### Stainless steel infusion bottle holder (2 x supporting hooks):

<u>Protrusion</u>	<u>Weight</u>	<u>Load</u>	<u>For supporting tube</u>
280 mm	varies	max. 6 kg	

Item no.: 0305-005.03 \_\_\_\_\_ diam. = 30 mm

Item no.: 0305-005.11 \_\_\_\_\_ diam. = 22 mm

Item no.: 0305-005.12 \_\_\_\_\_ diam. = 25 mm

Item no.: 0305-005.13 \_\_\_\_\_ diam. = 38 mm



#### Stainless steel infusion bottle holder (3 x supporting hooks):

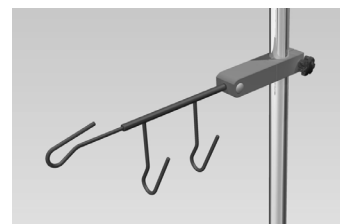
<u>Protrusion</u>	<u>Weight</u>	<u>Load</u>	<u>For supporting tube</u>
400 mm	varies	max. 6 kg	

Item no.: 0305-005.07 \_\_\_\_\_ diam. = 30 mm

Item no.: 0305-005.23 \_\_\_\_\_ diam. = 22 mm

Item no.: 0305-005.24 \_\_\_\_\_ diam. = 25 mm

Item no.: 0305-005.25 \_\_\_\_\_ diam. = 38 mm



#### Stainless steel infusion bottle holder (3 x supporting hooks):

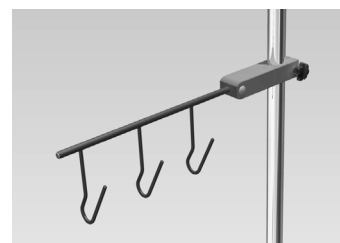
<u>Protrusion</u>	<u>Weight</u>	<u>Load</u>	<u>For supporting tube</u>
410 mm	varies	max. 6 kg	

Item no.: 0305-005.04 \_\_\_\_\_ diam. = 30 mm

Item no.: 0305-005.14 \_\_\_\_\_ diam. = 22 mm

Item no.: 0305-005.15 \_\_\_\_\_ diam. = 25 mm

Item no.: 0305-005.16 \_\_\_\_\_ diam. = 38 mm



### Infusion bottle holder for supporting tubes (various diam.)

completely adjustable for height and swivelling

#### Stainless steel infusion bottle holder (4 x supporting hooks):

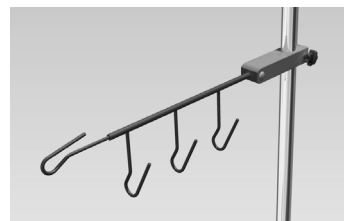
<u>Protrusion</u>	<u>Weight</u>	<u>Load</u>	<u>For supporting tube</u>
530 mm	varies	max. 6 kg	

Item no.: 0305-005.05 \_\_\_\_\_ diam. = 30 mm

Item no.: 0305-005.17 \_\_\_\_\_ diam. = 22 mm

Item no.: 0305-005.18 \_\_\_\_\_ diam. = 25 mm

Item no.: 0305-005.19 \_\_\_\_\_ diam. = 38 mm



#### Stainless steel infusion bottle holder (4 x supporting hooks):

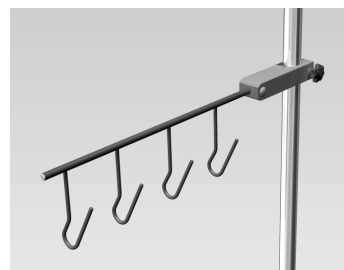
<u>Protrusion</u>	<u>Weight</u>	<u>Load</u>	<u>For supporting tube</u>
500 mm	varies	max. 6 kg	

Item no.: 0305-005.06 \_\_\_\_\_ diam. = 30 mm

Item no.: 0305-005.20 \_\_\_\_\_ diam. = 22 mm

Item no.: 0305-005.21 \_\_\_\_\_ diam. = 25 mm

Item no.: 0305-005.22 \_\_\_\_\_ diam. = 38 mm



#### Stainless steel infusion bottle holder (5 x supporting hooks):

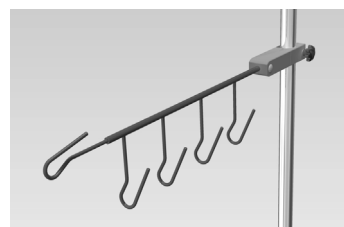
<u>Protrusion</u>	<u>Weight</u>	<u>Load</u>	<u>For supporting tube</u>
620 mm	varies	max. 6 kg	

Item no.: 0305-005 \_\_\_\_\_ diam. = 30 mm

Item no.: 0305-005.08 \_\_\_\_\_ diam. = 22 mm

Item no.: 0305-005.09 \_\_\_\_\_ diam. = 25 mm

Item no.: 0305-005.10 \_\_\_\_\_ diam. = 38 mm



### Infusion bottle holders for supporting tubes (diam. = 30 mm)

completely adjustable for height and swivelling

#### Stainless steel infusion bottle holder (1 supporting hook):

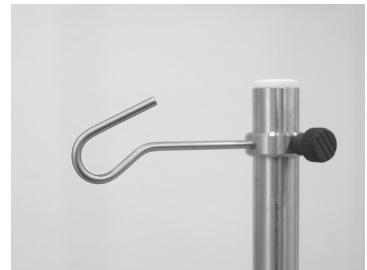
Protrusion

280 mm

Load

max. 6 kg

Item no.: 2001-028.02



### Safety bottle cross holder for supporting tube (various diam.)

completely adjustable for height and rotating

#### Stainless steel safety bottle cross holder (4 x supporting hooks) for fitting to a supporting tube (diam. 25 mm):

Protrusion

100 mm

Load

max. 6 kg

Item no.: 0317-002

#### Stainless steel safety bottle cross holder (4 x supporting hooks) for fitting to a supporting tube (diam. 30 mm):

Protrusion

100 mm

Load

max. 6 kg

Item no.: 0317-001

#### Stainless steel safety bottle cross holder (4 x supporting hooks) for fitting to a supporting tube (diam. 38 mm):

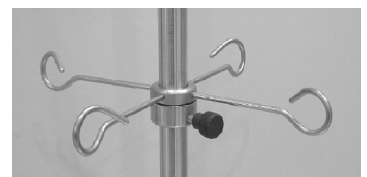
Protrusion

100 mm

Load

max. 6 kg

Item no.: 0317-003





### Stainless steel infusion bottle holder (supporting tube diam. = 25 mm)

Complete system, telescopic tube (diam. = 18 mm) height adjustable by approx. 1000 mm

Infusion bottle holder with bottle cross holder, incl. holding device for equipment rail (dim. 25 mm x 10 mm), drip glass and suitable holding device:

<u>Protrusion</u>	<u>Weight</u>	<u>Load</u>	<u>Supporting hooks</u>
45 mm	approx. 2 kg	max. 6 kg	4 items

**Item no.: 9030-1554** (1 x holding device, **Item no.: 9170-2515**)

**Item no.: 9030-1320** (2 x holding device, **Item no.: 9170-2515**)

Infusion bottle holder with hook rod, incl. holding device for equipment rail (dim. 25 mm x 10 mm), drip glass and suitable holding device:

<u>Protrusion</u>	<u>Weight</u>	<u>Load</u>	<u>Supporting hooks</u>
45 mm	approx. 2 kg	max. 6 kg	4 items

**Item no.: 9030-1322** (1 x holding device, **Item no.: 9170-2515**)



**Item no.: 9030-1554**

▼ Accessory suitable for infusion bottle holder:

- Holding device for infusion bottle holder (Item no.: 9030-9252), Page 38
- Wall distance keeper, Page 39
- Holding device for drip glass (Item no.: 9030-9104), Page 39
- Drip glass (Item no.: 9030-9106), Page 39

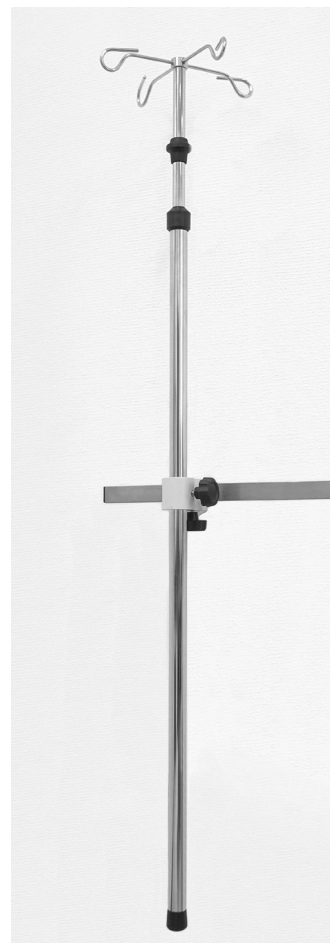
### Stainless steel infusion bottle holder (supporting tube diam. = 25 mm), single handed operation

Complete system, telescopic tube (diam. = 18 mm) height adjustable by approx. 800 mm

Infusion bottle holder with bottle cross holder, incl. holding device for equipment rail (dim. 25 mm x 10 mm), drip glass and suitable holding device:

<u>Protrusion</u>	<u>Weight</u>	<u>Load</u>	<u>Supporting hooks</u>
45 mm	approx. 2 kg	max. 6 kg	4 items

**Item no.: 9030-1330** (2 x holding devices, **Item no.: 9170-2515**)



▼ Accessory suitable for infusion bottle holder:

- Holding device for infusion bottle holder (Item no.: 9170-2515), see below
- Wall distance keeper, Page 39
- Holding device for drip glass (Item no.: 9030-9104), Page 39
- Drip glass (Item no.: 9030-9106), Page 39

### Holding device for infusion bottle holder (supporting tube diam. = 25 mm) for fitting to an equipment rail (dim. 25 mm x 10 mm)

**Holding device:**

<u>Protrusion</u>	<u>Weight</u>	<u>Load</u>
45 mm	0.29 kg	max. 40 kg

**Item no.: 9170-2515**



### Holding device for infusion bottle holder (supporting tube diam. = 25 mm)

for additional stabilisation of an infusion bottle holder on an equipment rail (dim. 25 mm x 10 mm)

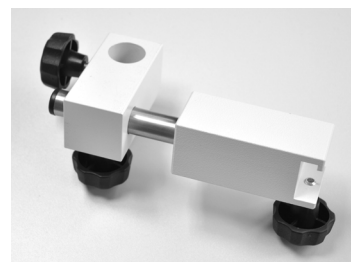
Wall distance keeper, adjustable:

Length

Item no.: 9170-2500 \_\_\_\_\_ 150 mm

Item no.: 9030-9108 \_\_\_\_\_ 180 mm

Item no.: 9030-9109 \_\_\_\_\_ 200 mm



### Holding device for drip glass

for fitting to a supporting tube (diam. = 25 mm)

Plastic holding device:

Supporting device for drip glass  
diam. = 50 mm

Item no.: 9030-9104



### Drip glass

Plastic drip glass:

Diameter  
50 mm

Length  
125 mm

Item no.: 9030-9106



### Aluminium (anodized) bed separator (telescopic tube)

incl. curtain rings, without curtain and without holding device

#### Telescopic tube, swivelling:

<u>Length / min. - max.</u>	<u>Weight</u>	<u>Curtain rings</u>
550 mm – 1,200 mm	approx. 0.5 kg	10 items

Item no.: 9010-1112

#### Telescopic tube, swivelling:

<u>Length / min. - max.</u>	<u>Weight</u>	<u>Curtain rings</u>
650 mm – 1.500 mm	approx. 0,6 kg	13 items

Item no.: 9010-1115

#### Telescopic tube, swivelling:

<u>Length / min. - max.</u>	<u>Weight</u>	<u>Curtain rings</u>
850 mm – 2,100 mm	approx. 0.7 kg	17 items

Item no.: 9010-1121



#### Telescopic tube, swivelling and bendable

<u>Length / min. - max.</u>	<u>Weight</u>	<u>Curtain rings</u>
380 mm – 1.300 mm	approx. 0,6 kg	10 items

Item no.: 9010-1213

#### Telescopic tube, swivelling and bendable

<u>Length / min. - max.</u>	<u>Weight</u>	<u>Curtain rings</u>
380 mm – 1.600 mm	approx. 0,7 kg	13 items

Item no.: 9010-1216

#### Telescopic tube, swivelling and bendable

<u>Length / min. - max.</u>	<u>Weight</u>	<u>Curtain rings</u>
380 mm – 2.200 mm	approx. 0,8 kg	17 items

Item no.: 9010-1222



#### ▼ Accessory suitable for **bed separator**:

- Holding device for bed separator, Page 41
- Curtain rings (Item no.: 9010-9110), Page 41
- Curtain for bed separator, Page 42

### Holding device for bed separator (telescopic tube)

**Stainless steel "GSH/F" holding device, for fitting to an equipment rail (dim. 25 mm x 10 mm):**

Height  
135 mm

**Item no.: 9010-9010**



**Cast aluminium "WH 95" holding device, for wall fitting:**

Height                      Width  
100 mm                      60 mm

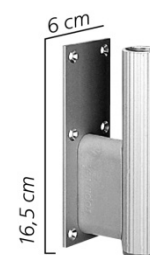
**Item no.: 9010-9020**



**WH holding device for wall fitting:**

Height                      Width  
100 mm                      60 mm

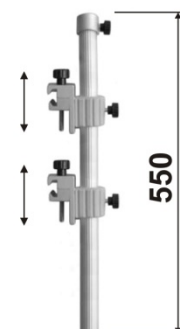
**Item no.: 9010-9030**



**Cast aluminium GSH/DK holding device, with "double claw", for fitting to an equipment rail (dim. 25 mm x 10 mm or 25 mm x 8 mm):**

Height                      Width  
550 mm                      60 mm

**Item no.: 9010-9055**



### Curtain rings

as replacements or for additional requirements

**Curtain ring, grey:**



Internal diameter  
42 mm

**Item no.: 9010-9110**



Curtain for bed separator, made from highly fire resistant Trevira®CS

washable with disinfectant agent up to 60°, quick cleaning and short drying time, available in various colours\*

<b>Curtain:</b>																				
<u>Height</u>	<u>Width</u>																			
1,200 mm																				
Item no.: 9014-3□12	1400 mm																			
Item no.: 9017-3□12	1700 mm																			
Item no.: 9023-3□12	2300 mm																			
<b>Curtain:</b>																				
<u>Height</u>	<u>Width</u>																			
1,400 mm																				
Item no.: 9014-3□14	1400 mm																			
Item no.: 9017-3□14	1700 mm																			
Item no.: 9023-3□14	2300 mm	<p><b>Application example</b></p> <table><tr><td>lilac</td><td>= 0</td></tr><tr><td>white</td><td>= 1</td></tr><tr><td>light blue</td><td>= 2</td></tr><tr><td>light green</td><td>= 3</td></tr><tr><td>melone</td><td>= 4</td></tr><tr><td>azure</td><td>= 5</td></tr><tr><td>peach</td><td>= 6</td></tr><tr><td>rosé</td><td>= 7</td></tr><tr><td>erika</td><td>= 8</td></tr></table>	lilac	= 0	white	= 1	light blue	= 2	light green	= 3	melone	= 4	azure	= 5	peach	= 6	rosé	= 7	erika	= 8
lilac	= 0																			
white	= 1																			
light blue	= 2																			
light green	= 3																			
melone	= 4																			
azure	= 5																			
peach	= 6																			
rosé	= 7																			
erika	= 8																			
<b>Curtain:</b>																				
<u>Height</u>	<u>Width</u>																			
1,750 mm																				
Item no.: 9014-3□17	1400 mm																			
Item no.: 9017-3□17	1700 mm																			
Item no.: 9023-3□17	2300 mm																			

\* The is entered in the free space in the item no., e.g.: 9014-3112 for a white curtain

### Stainless steel catheter holder

with transparent, removable Makrolon pane

**Double catheter holder, for hanging in an equipment rail (dim. 25 mm x 10 mm):**

<u>Height*</u>	<u>Width</u>	<u>Depth</u>	<u>Weight</u>
450 mm	120 mm	60 mm	approx. 2.1 kg

**Item no.: 0122-001**

\* Other height dimensions on request

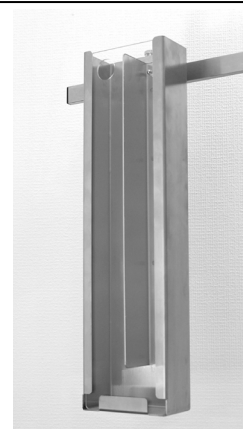


**Double catheter holder, fixing to an equipment rail (dim. 25 mm x 10 mm):**

<u>Height*</u>	<u>Width</u>	<u>Depth</u>	<u>Weight</u>
450 mm	120 mm	60 mm	approx. 2.1 kg

**Item no.: 0122-001.02**

\* Other height dimensions on request

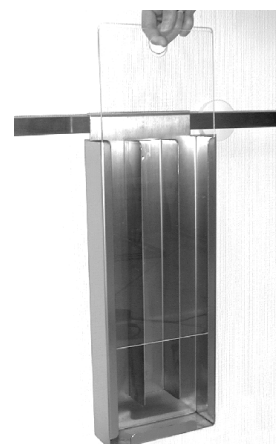


**Triple catheter holder, for hanging in an equipment rail (dim. 25 mm x 10 mm):**

<u>Height*</u>	<u>Width</u>	<u>Depth</u>	<u>Weight</u>
450 mm	180 mm	60 mm	approx. 3 kg

**Item no.: 0122-002**

\* Other height dimensions on request



### Stainless steel catheter holder

with spring cover and removable, transparent Makrolon pane

**Triple catheter holder, for hanging in an equipment rail (dim. 25 mm x 10 mm):**

<u>Height*</u>	<u>Width</u>	<u>Depth</u>	<u>Weight</u>
600 mm	180 mm	60 mm	approx. 3.5 kg

**Item no.: 0122-003**

\* Other height dimensions on request



**Triple catheter holder, fixing to an equipment rail (dim. 25 mm x 10 mm):**

<u>Height*</u>	<u>Width</u>	<u>Depth</u>	<u>Weight</u>
600 mm	180 mm	60 mm	3.5 kg

**Item no.: 0122-003.02**

\* Other height dimensions on request





### Catheter rinsing vessel, complete set

**Plastic catheter rinsing vessel, incl. holding device for fixing to an equipment rail (dim. 25 mm x 10 mm):**

<u>Height</u>	<u>Internal diameter</u>	<u>Weight</u>
400 mm	80 mm	0.35 kg

**Item no.: 9110-3140**



**Plastic catheter rinsing vessel, incl. holding device for fixing to an equipment rail (dim. 25 mm x 10 mm):**

<u>Height</u>	<u>Internal diameter</u>	<u>Weight</u>
200 mm	60 mm	0.3 kg

**Item no.: 9110-3120**



▼ Suitable replacement part for catheter rinsing vessel, complete set:

- Catheter rinsing vessel, individual components as replacements, see below

### Catheter rinsing vessel, individual components as replacements

**Plastic catheter rinsing vessels:**

<u>Height</u>	<u>Internal diameter</u>
400 mm	60 mm

**Item no.: 9110-3100**

**Plastic catheter rinsing vessels:**

<u>Height</u>	<u>Internal diameter</u>
200 mm	60 mm

**Item no.: 9110-3105**

**Holding device for catheter rinsing vessel**

**Item no.: 9110-3110**

**Replacement parts as for  
Item no.: 9110-3120 and  
item no: 9110-3120**

### Stainless steel wire catheter basket

for hanging in an equipment rail (dim. 25 mm x 10 mm)

#### Catheter basket with divider

<u>Height</u>	<u>Width</u>	<u>Depth</u>	<u>Weight</u>
280 mm	150 mm	100 mm	approx. 0.4 kg

Item no.: 9110-2228

#### Catheter basket with divider

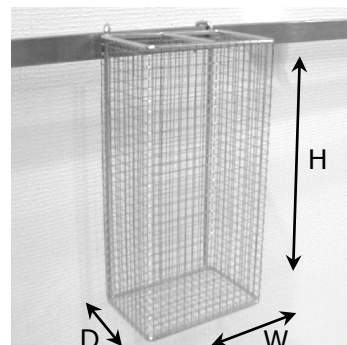
<u>Height</u>	<u>Width</u>	<u>Depth</u>	<u>Weight</u>
480 mm	150 mm	100 mm	approx. 0.6 kg

Item no.: 9110-2248

#### Catheter basket with divider

<u>Height</u>	<u>Width</u>	<u>Depth</u>	<u>Weight</u>
800 mm	180 mm	165 mm	approx. 0.8 kg

Item no.: 9110-2280



### Gloves basket

for hanging in an equipment rail (dim. 25 mm x 10 mm)

#### Stainless steel wire basket (diam. = 0.5 mm):

<u>Height</u>	<u>Width</u>	<u>Depth</u>	<u>Weight</u>
200 mm	134 mm	90 mm	approx. 0.8 kg

Item no.: 9110-2810



### Waste bowl

for hanging in an equipment rail (dim. 25 mm x 10 mm):

#### Stainless steel waste bowl, incl. supporting ring

<u>Height</u>	<u>Diameter</u>
85 mm	180 mm

Item no.: 9110-1718



**Stainless steel wire sterile supplies basket**  
for hanging in an equipment rail (dim. 25 mm x 10 mm):

<b>Sterile supplies basket</b>		
<u>Height</u>	<u>Width</u>	<u>Depth</u>
130 mm	575 mm	280 mm
<b>Item no.: 9110-2813</b>		
<hr/>		
<b>Sterile supplies basket</b>		
<u>Height</u>	<u>Width</u>	<u>Depth</u>
160 mm	250 mm	150 mm
<b>Item no.: 9110-2826</b>		
<hr/>		
<b>Sterile supplies basket</b>		
<u>Height</u>	<u>Width</u>	<u>Depth</u>
140 mm	150 mm	130 mm
<b>Item no.: 9110-2831</b>		
<hr/>		
<b>Sterile supplies basket</b>		
<u>Height</u>	<u>Width</u>	<u>Depth</u>
300 mm	100 mm	200 mm
<b>Item no.: 9110-2830</b>		
<hr/>		
<b>Sterile supplies basket</b>		
<u>Height</u>	<u>Width</u>	<u>Depth</u>
350 mm	215 mm	200 mm
<b>Item no.: 9110-2840</b>		
<hr/>		
<b>Sterile supplies basket</b>		
<u>Height</u>	<u>Width</u>	<u>Depth</u>
275 mm	575 mm	260 mm
<b>Item no.: 9110-2828</b>		

### Waste collector to accommodate discard bags

for hanging in an equipment rail (dim. 25 mm x 10 mm), with spring cover (grey)

**Waste collector, incl. holding device (not including discard bag):**

Capacity  
6 litres

Frame colour  
white

**Item no.: 9130-0106**

---

**Waste collector, incl. holding device (not including discard bag):**

Capacity  
15 litres

Frame colour  
white

**Item no.: 9130-0115**



---

### Stainless steel holder for discard bag

for hanging in an equipment rail (dim. 25 mm x 10 mm):

**Discard bag holder (not including discard bag):**

Weight  
approx. 0.8 kg

**Item no.: 9130-0125**



## Universal modules: Cable management

---

### Tube and cable holder for supporting tube (diam. = 30 mm)

completely adjustable for height and rotating

**Plastic tube and cable holder, with knurled screw and fitting opening (10 items)**

<u>Height</u>	<u>Width</u>	<u>Depth</u>	<u>Fitting opening</u>
15 mm	70 mm	35 mm	33 mm x 18 mm

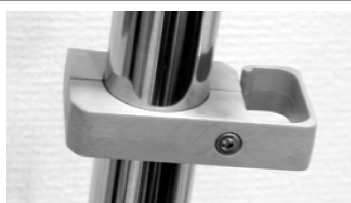
**Item no.: 0450-002.01**



**Plastic tube and cable holder, with socket hexagon screw and fitting opening (10 items):**

<u>Height</u>	<u>Width</u>	<u>Depth</u>	<u>Fitting opening</u>
15 mm	70 mm	35 mm	33mm x 18 mm

**Item no.: 0450-002.02**



**Plastic tube and cable holder, with knurled screw and two fitting openings (10 items)**

<u>Height</u>	<u>Width</u>	<u>Depth</u>	<u>Fitting opening</u>
15 mm	70 mm	35 mm	33 mm x 18 mm

**Item no.: 0450-001.01**



**Plastic tube and cable holder, with socket hexagon screw and two fitting openings (10 items)**

<u>Height</u>	<u>Width</u>	<u>Depth</u>	<u>Fitting opening</u>
15 mm	70 mm	35 mm	33 mm x 18 mm

**Item no.: 0450-001.02**



---

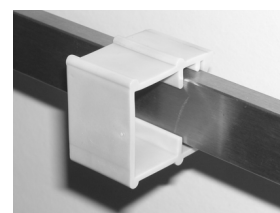
### Tube and cable holder for equipment rail (dim. 25 mm x 10 mm)

adjustable horizontally

**Plastic tube and cable holder, snap fitting (10 items):**

<u>Height</u>	<u>Width</u>	<u>Depth</u>	<u>Fitting opening</u>
40 mm	30 mm	43 mm	32 mm x 22 mm

**Item no.: 9090-5080**

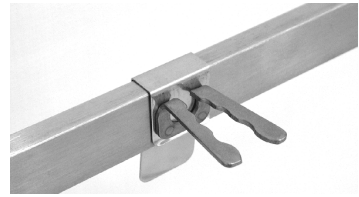


### Tube holder for equipment rail (dim. 25 mm x 10 mm)

#### Stainless steel tube holder, snap fitting:

Fitting opening  
up to diam. = 13 mm

Item no.: 9090-5095

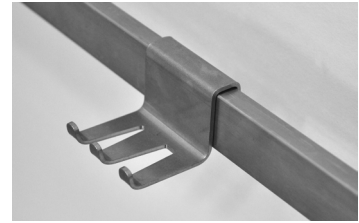


#### Stainless steel tube holder, for hanging:

Narrow fitting slot  
diam. = 4 mm to 8 mm

Wide fitting slot  
diam. = 8 mm to 12 mm

Item no.: 9910-0701



---

### Cable holder for equipment rail (dim. 25 mm x 10 mm)

#### Stainless steel cable holder, incl. holding claw for fixing to an equipment rail:

Fitting opening  
approx. 28 mm

Item no.: 0468-001



#### Stainless steel cable holder, for hanging on an equipment rail:

Fitting opening  
up to diam. = 13 mm

Item no.: 9910-0700



### Articulated arms with flexible shaft, bright chrome finish

incl. ball clamp fixing and supporting gudgeon (diam. = 10 mm) for holding device

**Articulated arm (diam. 13 mm) with one rigid and one half flexible arm, without holding device:**

Protrusion  
approx. 1130 mm

**Item no.: 9090-1210**



**Articulated arm (diam. 13 mm) with two rigid and one half flexible arm, without holding device:**

Protrusion  
approx. 1460 mm


**Item no.: 9090-1310**

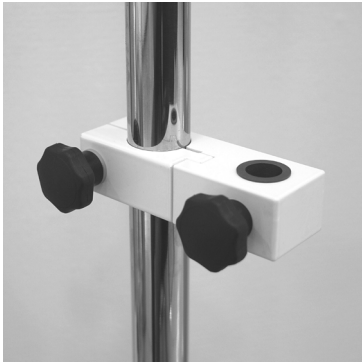


▼ Accessory suitable for articulated arm with flexible shaft:

- Holding device for articulated arm, Page 52
- Tube clips Page 53

Holding device for articulated arm  
with drilling for supporting gudgeon (diam. = 10 mm)

<p><b>Holding device with removal safety device for fitting to an equipment rail (dim. 25 x 10 mm):</b></p> <p><u>Weight</u> approx. 0.2 kg</p> <p><b>Item no.: 9090-1225</b></p>	
---	---

<p><b>Holding device with removal safety device for fixing to a supporting tube (various diams.), adjustable height and swivelling:</b></p>				
<u>Protrusion:</u> 60 mm	<u>Weight</u> varies	<u>Load</u> max. 5 kg	<u>For supporting tube</u>	
<b>Item no.: 0307-003.03</b>			diam. 30 mm	
<b>Item no.: 0307-003.11</b>			diam. 22 mm	
<b>Item no.: 0307-003.12</b>			diam. 25 mm	
<b>Item no.: 0307-003.13</b>			diam. 38 mm	



### Plastic tube holding clips

for articulated arm

#### Double tube holding clips with ball head for ball clamp fixing:

##### Fixing options

2 x diam. 15 mm and 2 x diam. 22 mm

**Item no.: 9090-5030**

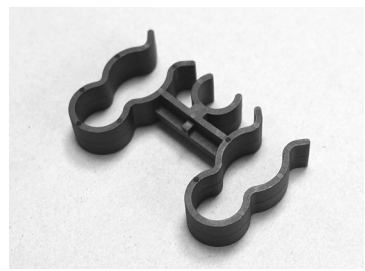


#### Double tube clips for rod (diam. = 13 mm):

##### Fixing options

2 x diam. 15 mm / 2 x diam. 22 mm

**Item no.: 9090-5035**



#### Tube clips for rod (diam. = 13 mm):

##### Fixing options

1 x diam. 22 mm

**Item no.: 9090-5040**



### Halogen lamp, D<sup>med</sup>® hx 35 P FX , with sprung articulated arm

for fixing to an equipment rail (dim. 25 mm x 10 mm) or to a supporting tube (various diams.) by means of a suitable holding device (not supplied within scope of delivery)

**Halogen lamp with supporting gudgeon (diam. = 16 mm):**

Connection voltage: 230 V ; 50 Hz AC

Power consumption: approx. 40 W

Operating equipment: Electronic transformer

Switch: Two-stage rocker switch (60% / 100%)

Type of circuit: Single pole, secondary

Connection cable: Length = approx. 1.4 m

Weight: 1.3 kg

Protection class: II

Lamp casing: Polyamide

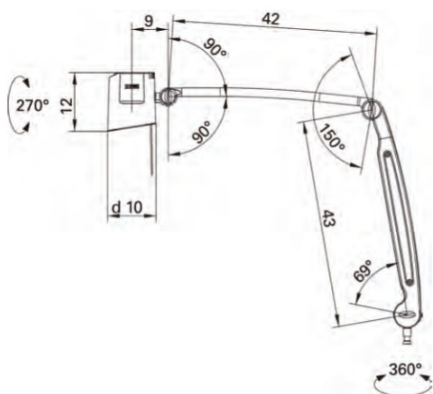


Beam angle

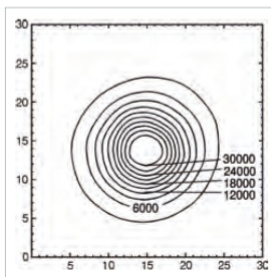
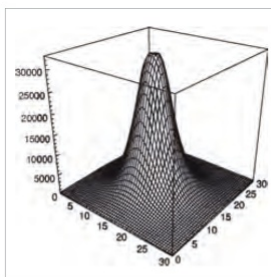
Brightness

**Item no.: 9070-1010** \_\_\_\_\_ Flood = 36° \_\_\_\_\_ 6,000 Lux / 0.5 m

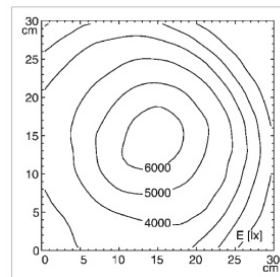
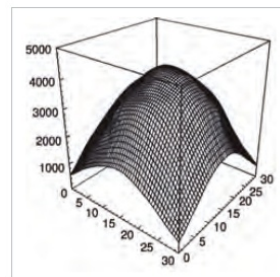
**Item no.: 9070-1009** \_\_\_\_\_ Spot = 10° \_\_\_\_\_ 32,000 Lux / 0.5 m



Light distribution: Spot



Light distribution: Flood



#### ▼ Suitable accessory for Halogen lamp D<sup>med</sup>® hx 35 P FX:

- Holding device for lamps, see Page 57

### Halogen lamp, D<sup>med</sup>® halux Two 35/35 P FX, with sprung articulated arm

for fixing to an equipment rail (dim. 25 mm x 10 mm) or to a supporting tube (various diams.) by means of a suitable holding device (not supplied within scope of delivery)

**Halogen lamp with supporting gudgeon (diam. = 16 mm):**

Connection voltage: 230 V ; 50 Hz AC

Power consumption: approx. 40 W

Operating equipment: Electronic transformer

Switch: Three-stage rocker switch (Spot-0-Flood)

Type of circuit: Single pole, secondary, individual switching

Connection cable: Length = approx. 3 m

Weight: 1.5 kg

Protection class: II

Lamp casing: Polycarbonate

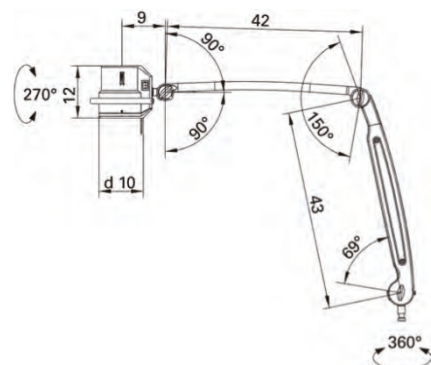
Beam angle

Brightness

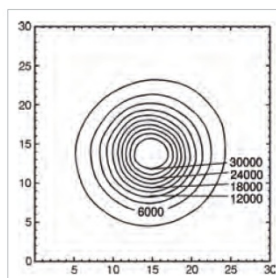
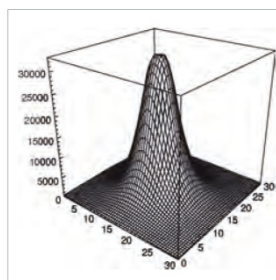
Flood = 36° \_\_\_\_\_ 5,000 Lux / 0.5 m

Spot = 10° \_\_\_\_\_ 30,000 Lux / 0.5 m

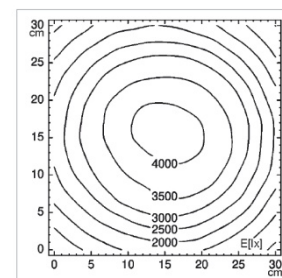
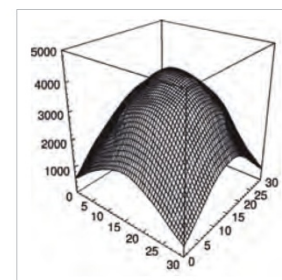
**Item no.: 9070-1030**



Light distribution:



Light distribution: Flood



▼ Suitable accessory for Halogen lamp D<sup>med</sup>® halux Two 35/35 P FX:

- Holding device for lamps, see Page 57

### LED lamp D<sup>med</sup>® halux LED 20 P LX with friction articulated arm

for fixing to an equipment rail (dim. 25 mm x 10 mm) or to a supporting tube (various diams.) by means of a suitable holding device (not supplied within scope of delivery)

**LED lamp with supporting gudgeon (diam. = 16 mm):**

Connection voltage: 100 - 240 V; 50/60 Hz AC

Power consumption: approx. 25 W

Operating equipment: Electronic converter

Switch: Membrane key-pad, rocker switch (I/O)

Connection cable: Length = approx. 2 m

Weight: 1.5 kg

Illumination area / 0.5 m: diam. = 17 cm

Special features: 3 x colour temperatures, 5 dimming levels

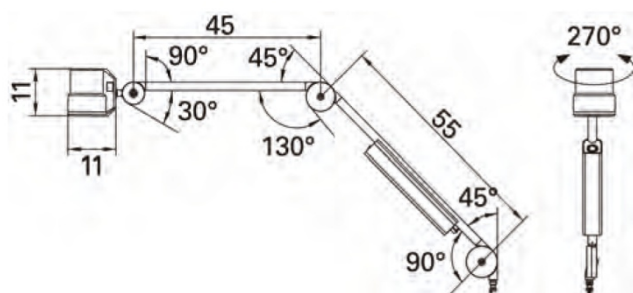
Colour temperature: approx. 3500 K / 4100 K / 4700 K

Protection class: I

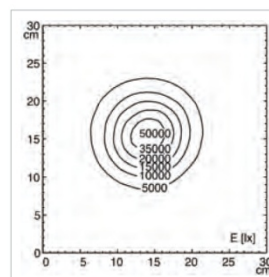
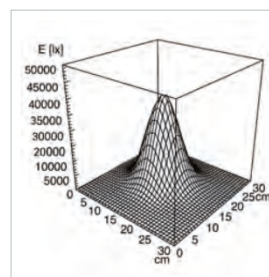
Lamp casing: Polycarbonate

Brightness: 50,000 Lux / 0.5 m

**Item no.: 9070-1110**



#### Light distribution:



#### ▼ Suitable accessory for LED lamp D<sup>med</sup>® halux LED 20 P LX:

- Holding device for lamps, see Page 57
- Other power cables available

**Holding device for lamps**

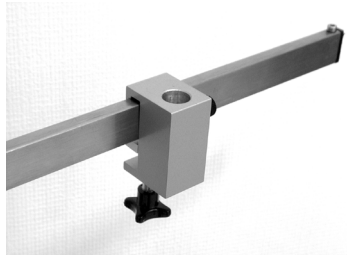
with drilling for supporting gudgeon (diam. = 16mm)

**Aluminium holding device (anodized natural colour) with removal safety device for fitting to an equipment rail (dim. 25 x 10 mm):**

Weight

Approx. 0.2 kg

**Item no.: 9070-1011**



**Holding device with removal safety device for fixing to a supporting tube (various diams.), adjustable height and swivelling:**

Protrusion:

60 mm

Weight

varies

Load

max. 5 kg

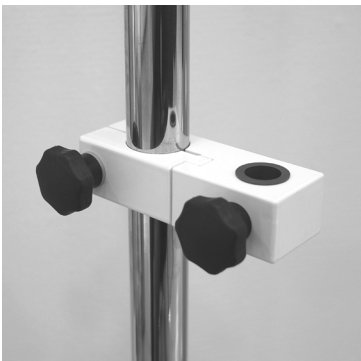
For supporting tube

**Item no.: 0307-003.02** \_\_\_\_\_ diam. = 30 mm

**Item no.: 0307-003.14** \_\_\_\_\_ diam. = 22 mm

**Item no.: 0307-003.15** \_\_\_\_\_ diam. = 25 mm

**Item no.: 0307-003.16** \_\_\_\_\_ diam. = 38 mm



### Socket outlet boards, safety sockets at 45°

incl. flexible cable (cross-section = 6 mm<sup>2</sup>; length = 2,000 mm) with socket connectors for potential equalisation, mains connection cable (cross-section = 3 x 1.5 mm<sup>2</sup>; length = 2,000 mm) with Schuko angle plug

#### Socket outlet boards with three safety sockets and one potential equalisation connector:

<u>Rated voltage / current</u>	<u>Length of socket outlet board</u>	<u>Tube holder</u>
230 V / 16 A	270 mm	2 items

Item no.: 9070-1201 \_\_\_\_\_ (without tube holder)

Item no.: 0407-020.01 \_\_\_\_\_ with tube holder \_\_\_\_\_ diam. = 25 mm

Item no.: 0407-020.02 \_\_\_\_\_ with tube holder \_\_\_\_\_ diam. = 30 mm



#### Socket outlet boards with four safety sockets and two potential equalisation connectors:

<u>Rated voltage / current</u>	<u>Length of socket outlet board</u>	<u>Tube holder</u>
230 V / 16 A	320 mm	2 items

Item no.: 9070-1202 \_\_\_\_\_ (without tube holder)

Item no.: 0407-020.11 \_\_\_\_\_ with tube holder \_\_\_\_\_ diam. = 25 mm

Item no.: 0407-020.12 \_\_\_\_\_ with tube holder \_\_\_\_\_ diam. = 30 mm



#### Socket outlet boards with six safety sockets and four potential equalisation connectors:

<u>Rated voltage / current</u>	<u>Length of socket outlet board</u>	<u>Tube holder</u>
230 V / 16 A	480 mm	2 items

Item no.: 9070-1203 \_\_\_\_\_ (without tube holder)

Item no.: 0407-020.21 \_\_\_\_\_ with tube holder \_\_\_\_\_ diam. = 25 mm

Item no.: 0407-020.22 \_\_\_\_\_ with tube holder \_\_\_\_\_ diam. = 30 mm





### Flow-meter, completely adjustable

with standard screw connection for aerosol humidifiers, bubble humidifiers and normal Aquapack and single operation humidifiers, anodized aluminium base, high quality PSU measuring tube

Flow-meter oxygen (O<sub>2</sub>), for fixing to an equipment rail (dim. 25 mm x 10 mm), connection to an oxygen supply via a connection tube with DIN outlet plug connector and NIST screw connection (connection tube not included in scope of delivery):

Delivery rate  
0 – 15 l / min

Supply pressure  
5 bar

Weight  
approx. 450 g

**Item no.: 9910-0615**

Suitable accessories: - Connection tube, Page 65



Flow meter for oxygen (O<sub>2</sub>), with DIN plug nipple 13260-2, for direct connection to an oxygen supply as per DIN EN ISO 9170-1:

Delivery rate  
0 – 15 l / min

Supply pressure  
5 bar

Weight  
approx. 250 g

**Item no.: 9910-0605**



Flow-meter for compressed air, for fixing to an equipment rail (dim. 25 mm x 10 mm), connection to a compressed air supply via a connection tube with DIN outlet plug connector and NIST screw connection (connection tube not included in scope of delivery):

Delivery rate  
0 – 15 l / min

Supply pressure  
5 bar

Weight  
approx. 450 g

**Item no.: 9910-0620**

Suitable accessories: - Connection tubes, Page 65



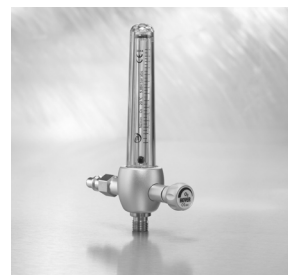
Flow-meter for compressed air, with DIN plug nipple 13260-2, for direct connection to a compressed air supply as per DIN EN ISO 9170-1:

Delivery rate  
0 – 15 l / min

Supply pressure  
5 bar

Weight  
approx. 250 g

**Item no.: 9910-0610**



▼ Accessory suitable for flow-meter:

- Replacement parts for flow-meter, see Page 60

### Replacement parts for flow-meter

Gasket set (1):

Item no.: 9910-0440

Outer tube (2):

Item no.: 9910-0440



### Aerosol atomiser

Upper part anodized aluminium, supply glass autoclavable PSU

Aerosol atomiser for flow-meter with standard screw connection:

Supply amount

250 ml

Weight

approx. 450 g

Item no.: 9910-0645



### Bubble humidifier

Upper part anodized aluminium, supply glass autoclavable PSU

Bubble humidifier for flow-meter with standard screw connection:

Supply amount

250 ml

Weight

approx. 400 g

Item no.: 9910-0640



### Supply glass (screw closure) for aerosol atomiser and bubble humidifier

Supply glass, autoclavable PSU:

Supply amount

250 ml

Item no.: 9910-0648

Supply glass as for  
Item no.: 9910-0640



### Secretion collection glasses (screw closure) with overflow protection

For connection to a compressed air injector or a vacuum regulator, upper part anodized aluminium, collection glass autoclavable PSU

**Secretion collection glass with patient and vacuum tube angled connectors:**

Intake amount  
1 litre

Weight  
approx. 850 g

**Item no.: 9910-0515**

Suitable accessories: - Supporting frame for secretion collection glass, Page 62



**Secretion collection glass with patient angle tube connectors and intake for direct connection to a compressed air injector or a vacuum regulator.**

Intake amount  
1 litre

Weight  
approx. 850 g

**Item no.: 9910-0505**



**secretion collection glass for fitting to an equipment rail (dim. 25 mm x 10 mm), with patient and vacuum angle tube connectors:**

Intake amount  
1 litre

Weight  
approx. 1115 g

**Item no.: 9910-0526**



▼ **Accessory suitable for secretion collection glass with overflow protection:**

- Collection glass (screw closure) as replacement part (1 litre), see below

### Collection glass (screw closure as replacement

**collection glass, autoclavable PSU:**

Collection volume  
1 litre

**Item no.: 9910-0518**



### Supporting frame for secretion collection glass

to support two secretion glasses (1 litre)

**Stainless steel supporting frame, for hanging on an equipment rail: 25 mm x 10 mm):**

Weight

approx. 650 g

**Item no.: 9910-0516**



---

### Secretion collection glass as a safety item (screw closure) with overflow protection

For connection to a compressed air injector or a vacuum control, upper part anodized aluminium, collection glass autoclavable PSU

**secretion collection glass with suction set for supporting frame:**

Intake amount

0.3 litre

Weight

approx. 850 g

**Item no.: 9910-0550**



▼ Accessory suitable for secretion collection glass as a safety item:

- Collection glass (screw closure) as replacement part, see below

---

### Collection glass (screw closure) as replacement

**Collection glass, autoclavable PSU:**

Collection volume


0.3 litre

**Item no.: 9910-0553**



Secretion collection glass (bayonet closure) with overflow protection

For connection to a compressed air injector or a vacuum control, upper part plastic, collection glass autoclavable PSU

Secretion collection glass for fitting to an equipment rail (dim. 25 mm x 10 mm):			
	<u>Collection volume</u>	<u>Weight</u>	
Item no.: 9910-0525 (not shown)	1 litre	approx. 850 g	
Item no.: 9910-0535	2 litres	approx. 1000g	
Item no.: 9910-0545 (not shown)	3 litres	approx. 1005 g	

Collection glass (bayonet) as replacement

Collection glass, autoclavable PSU:		
<u>Capacity</u> 1 litre	Item no.: 9910-0528	
Collection glass, autoclavable PSU:		
<u>Capacity</u> 2 litre	Item no.: 9910-0538	
Collection glass, autoclavable PSU:		
<u>Capacity</u> 3 litre	Item no.: 9910-0548	
		Item no.: 9910-0528 and item no: 9910-0548

### Compressed air injector with rapid closure valve, low noise

for generation of a controllable vacuum, with rapid closure valve, body anodized aluminium with connection points for tube connectors or secretion collection glass (union nut 9/16"), pressure gauge scale from 0 to -1000 mbar

**Compressed air injector, with DIN plug nipple 13260-2, for direct connection to a compressed air supply as per DIN EN ISO 9170-1:**

<u>Supply pressure</u>	<u>Weight</u>	<u>Suction power at -800 mbar</u>
5 bar	approx. 650 g	

**Item no.: 9910-0405** \_\_\_\_\_ 20 l / min (+/- 10%)

**Item no.: 9910-0406** \_\_\_\_\_ 30 l / min (+/- 10%)



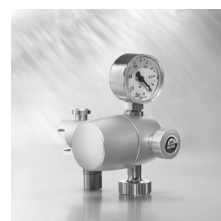
**compressed air injector, for fixing to an equipment rail (dim. 25 mm x 10 mm), connection to a compressed air supply via a connection tube with DIN outlet plug connector and NIST screw connection (connection tube not included in scope of delivery):**

<u>Supply pressure</u>	<u>Weight</u>	<u>Suction power at -800 mbar</u>
5 bar	approx. 650 g	

**Item no.: 9910-0415** \_\_\_\_\_ 20 l / min (+/- 10%)

**Item no.: 9910-0416** (not shown) \_\_\_\_\_ 30 l / min (+/- 10%)

Suitable accessories: - Connection tubes, see Page 65  
- Tube adaptor, see Page 66



### Vacuum regulator valve

with rapid closure valve, body anodized aluminium with connection points for tube connectors or secretion collection glass (union nut 9/16"), pressure gauge scale from 0 to -1000 mbar

**vacuum regulator valve, for fixing to an equipment rail (dim. 25 mm x 10 mm), connection to a vacuum supply point via a connection tube with DIN outlet plug connector and NIST screw connection (connection tube not included in scope of delivery):**

<u>Supply pressure</u>	<u>Weight</u>	<u>Suction power at -800 mbar</u>
-800 mbar	approx. 850 g	40 l / min (+/- 10%)

**Item no.: 9910-0310**



▼ Accessory suitable for vacuum regulator valve:

- Connection tubes, see Page 65
- Tube adaptor, see Page 66

### Vacuum regulator valve

with rapid closure valve, body anodized aluminium with connection points for tube connectors or secretion collection glass (union nut 9/16"), pressure gauge scale from 0 to -1000 mbar

**Vacuum regulator valve, with DIN plug nipple 13260-2, for direct connection to a vacuum supply point as per DIN EN ISO 9170-1:**

Supply pressure

-800 mbar

Weight

approx. 750 g

Suction power at -800 mbar

40 l / min (+/- 10%)

**Item no.: 9910-0305**



### Connection tubes

with NIST screw connection as per DIN EN ISO 5359 outlet plug connector as per DIN 13260-2

**Connection tube with outlet plug connector for oxygen supply points as per DIN EN ISO 9170-1:**

Hose length

1.5 m

Weight

approx. 350 g

Colour coding

**Item no.: 9910-0684**

ISO 32

**Item no.: 9910-0682**

neutral



**Connection tube for compressed air supply points as per DIN EN ISO 9170-1:**

Hose length

1.5 m

Weight

approx. 350 g

Colour coding

**Item no.: 9910-0454**

ISO 32

**Item no.: 9910-0452**

neutral



**Connection tube for vacuum supply points as per DIN EN ISO 9170-1:**

Hose length

1.5 m

Weight

approx. 350 g

Colour coding

**Item no.: 9910-0336**

ISO 32

**Item no.: 9910-0334**

neutral

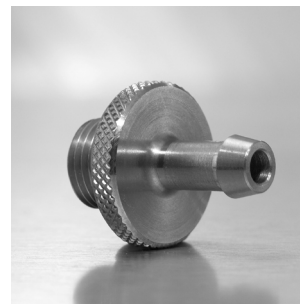


### Tube adapter threaded

**Stainless steel tube adapter, for connection to a compressed air adaptor or a vacuum regulator valve:**

Hose connection nipple  
diam. 7 mm

**Item no.: 9910-0440**



**Stainless steel tube adapter, for connection to a flow-meter:**

Hose connection nipple  
diam. 6 mm

**Item no.: 9910-0658**



**Plastic tube adapter (green), for connection to a flow-meter:**

Hose connection nipple  
diam. 5 mm – diam. 9 mm

**Item no.: 9910-0656**



### Suction set

incl. fingertip

Suction set, consisting of silicon tube (Item no.: 9910-0501) and fingertip (Item no.: 9910-0578):

Item no.: 9910-0500 \_\_\_\_\_ incl. plastic bacteria filter

Item no.: 9910-0502 \_\_\_\_\_ without bacteria filter (not shown)



---

### Silicon tube

Silicon tube, transparent:

Tube length

2 m

internal diameter

6 mm

Wall thickness

2 mm

Item no.: 9910-0501



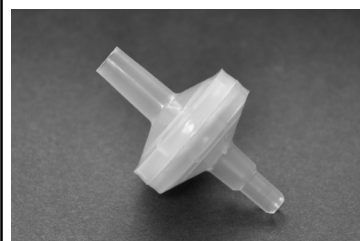
---

### Plastic bacteria filter

Single use

Bacteria filter for silicon tube:

Item no.: 9910-0574



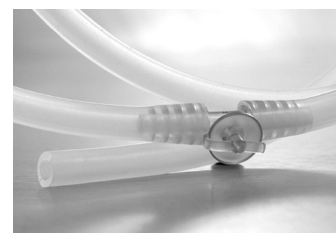
---

### Plastic fingertip

Single use

Fingertip for silicon tube:

Item no.: 9910-0578



### Stainless steel bacteria filter housing

with a scale for setting the sterilisation flow of the changeable membranes (membranes are not included in the scope of delivery), autoclavable

Bacteria filter housing for connection to a compressed air injector or vacuum regulator:

Item no.: 9910-0562



▼ Accessory suitable for stainless steel bacteria filter housing:

- Accessories and replacement parts for stainless steel bacteria filter housing, see below

### Accessories and replacement parts for stainless steel bacteria filter housing

**Membrane filter set (1):**

Filter /set

10 items

Item no.: 9910-0570

**Stoppers for bacteria filter housing (2):**

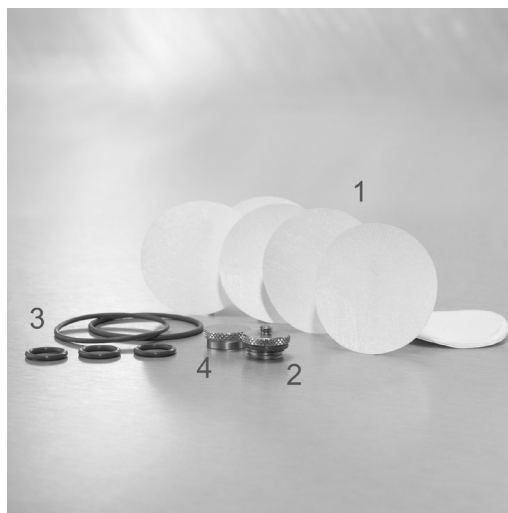
Item no.: 9910-0571

**Seal set (3):**

Item no.: 9910-0572

**Cover cap for bacteria filter housing (4):**

Item no.: 9910-0573





### Outlet plug connector for medical gases

Colour coding as per ISO 32

#### Oxygen (O<sub>2</sub>) outlet connector plug:

Tube connection nipple

Diam. 7 mm

Weight

approx. 125 g

Standard

DIN 13260-2

**Item no.: 0047-0480**



#### Compressed air outlet plug connector:

Tube connection nipple

Diam. 7 mm

Weight

approx. 125 g

Standard

DIN 13260-2

**Item no.: 0047-0482**



#### N<sub>2</sub>O outlet plug connector:

Tube connection nipple

Diam. 7 mm

Weight

approx. 125 g

Standard

DIN 13260-2

**Item no.: 0047-0486**



#### Vacuum (VAC) outlet plug connector:

Tube connection nipple

Diam. 7 mm

Weight

approx. 125 g

Standard

DIN 13260-2

**Item no.: 0047-0484**



#### Plug for AGFS (60°):

Tube connection nipple

Diam. 22 mm

Weight

approx. 80 g

Standard

DIN EN ISO 9170-2

**Item no.: 0047-0508**



#### Plug for air-motor (dimensions in mm):

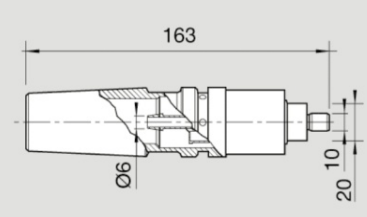
Weight

approx. 305 g

Standard

DIN EN ISO 737-6

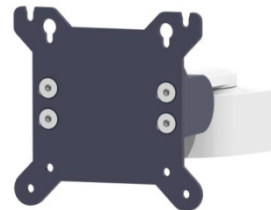
**Item no.: 0047-0528**



### Monitor support arms, single arm, swivelling (Vesa 75/100 adapter)

with round tube carrier or standard rail adapter or screw-in holder for BSP 2500 / BSP 2600 and DVE systems, the monitor carrier can be swivelled and tilted

<b>Monitor carrier arm:</b>		
<u>Type of fixing</u>	<u>Carrier arm length</u>	<u>Working load</u>
Variable tube carrier	100 mm	max. 20 kg
<b>Item no.: 9400-0030</b>		
<hr/>		
<b>Monitor carrier arm:</b>		
<u>Type of fixing</u>	<u>Carrier arm length</u>	<u>Working load</u>
Standard rail adapter	100 mm	max. 20 kg
<b>Item no.: 9400-0010</b>		
<hr/>		
<b>Monitor carrier arm:</b>		
<u>Type of fixing</u>	<u>Carrier arm length</u>	<u>Working load</u>
Screw-in holder	100 mm	max. 20 kg
<b>Item no.: 9400-0050</b>		



Variable tube carrier



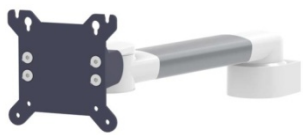


Standard rail adapter



Screw-in holder

### Monitor carrier arm, single arm, swivelling (Vesa 75/100 adapter, Philips adapter or 5" insertion element)

with round tube carrier, standard rail adapter or screw-in holder for BSP 2500 / BSP 2600 and DVE systems, the monitor carrier\* can be swivelled and tilted




<b>Monitor carrier arm:</b>  <table> <tr> <th>Type of fixing</th><th>Carrier arm length</th><th>Working load</th></tr> <tr> <td>Variable tube carrier</td><td> </td><td>max. 18 kg</td></tr> <tr> <td>Item no.: 9400-014 <input type="checkbox"/></td><td>240 mm</td><td></td></tr> <tr> <td>Item no.: 9400-016 <input type="checkbox"/></td><td>300 mm</td><td></td></tr> </table>			Type of fixing	Carrier arm length	Working load	Variable tube carrier		max. 18 kg	Item no.: 9400-014 <input type="checkbox"/>	240 mm		Item no.: 9400-016 <input type="checkbox"/>	300 mm	
Type of fixing	Carrier arm length	Working load												
Variable tube carrier		max. 18 kg												
Item no.: 9400-014 <input type="checkbox"/>	240 mm													
Item no.: 9400-016 <input type="checkbox"/>	300 mm													
 <p>Vesa 75 / 100 adapter = 0</p>														
<b>Monitor carrier arm:</b>  <table> <tr> <th>Type of fixing</th><th>Carrier arm length</th><th>Working load</th></tr> <tr> <td>Standard rail adapter</td><td> </td><td>max. 18 kg</td></tr> <tr> <td>Item no.: 9400-010 <input type="checkbox"/></td><td>240 mm</td><td></td></tr> <tr> <td>Item no.: 9400-012 <input type="checkbox"/></td><td>300 mm</td><td></td></tr> </table>			Type of fixing	Carrier arm length	Working load	Standard rail adapter		max. 18 kg	Item no.: 9400-010 <input type="checkbox"/>	240 mm		Item no.: 9400-012 <input type="checkbox"/>	300 mm	
Type of fixing	Carrier arm length	Working load												
Standard rail adapter		max. 18 kg												
Item no.: 9400-010 <input type="checkbox"/>	240 mm													
Item no.: 9400-012 <input type="checkbox"/>	300 mm													
 <p>5" insertion element = 2</p>														
<b>Monitor carrier arm:</b>  <table> <tr> <th>Type of fixing</th><th>Carrier arm length</th><th>Working load</th></tr> <tr> <td>Screw-in holder</td><td> </td><td>max. 18 kg</td></tr> <tr> <td>Item no.: 9400-018 <input type="checkbox"/></td><td>240 mm</td><td></td></tr> <tr> <td>Item no.: 9400-020 <input type="checkbox"/></td><td>300 mm</td><td></td></tr> </table>			Type of fixing	Carrier arm length	Working load	Screw-in holder		max. 18 kg	Item no.: 9400-018 <input type="checkbox"/>	240 mm		Item no.: 9400-020 <input type="checkbox"/>	300 mm	
Type of fixing	Carrier arm length	Working load												
Screw-in holder		max. 18 kg												
Item no.: 9400-018 <input type="checkbox"/>	240 mm													
Item no.: 9400-020 <input type="checkbox"/>	300 mm													
 <p>Philips adapter = 4</p>														

 <p>Variable tube carrier</p>	 <p>Standard rail adapter</p>	 <p>Screw-in holder</p>
--	--	--

\* The missing part of the item no. is completed with the figure for the required monitor carrier, e.g. 9400-0184 for a supporting arm with a Philips adapter.

### Monitor carrier arm, double arm, swivelling (Vesa 75/100 adapter, Philips adapter or 5" insertion element)

with round tube carrier, standard rail adapter or screw-in holder for BSP 2500 / BSP 2600 and DVE systems, the monitor carrier\* can be swivelled and tilted

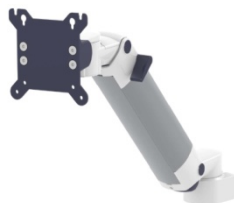


<b>Monitor carrier arm:</b>			 <p>Vesa 75 / 100 adapter = 0</p>
<u>Type of fixing</u>	<u>Carrier arm length</u>	<u>Working load</u>	
Variable tube carrier			
Item no.: 9400-026 <input type="checkbox"/>	2 x 240 mm	max. 15 kg	
Item no.: 9400-028 <input type="checkbox"/>	2 x 300 mm	max. 12.5 kg	
<b>Monitor carrier arm:</b>			 <p>5" insertion element = 2</p>
<u>Type of fixing</u>	<u>Carrier arm length</u>	<u>Working load</u>	
Standard rail adapter			
Item no.: 9400-022 <input type="checkbox"/>	2 x 240 mm	max. 15 kg	
Item no.: 9400-024 <input type="checkbox"/>	2 x 300 mm	max. 12.5 kg	
<b>Monitor carrier arm:</b>			 <p>Philips adapter = 4</p>
<u>Type of fixing</u>	<u>Carrier arm length</u>	<u>Working load</u>	
Screw-in holder			
Item no.: 9400-030 <input type="checkbox"/>	2 x 240 mm	max. 15 kg	
Item no.: 9400-032 <input type="checkbox"/>	2 x 300 mm	max. 12.5 kg	

 <p>Variable tube carrier</p>	 <p>Standard rail adapter</p>	 <p>Screw-in holder</p>
--	--	--

\* The missing part of the item no. is completed with the figure for the required monitor carrier, e.g. 9400-0284 for a monitor carrier arm with a Philips adapter.

### Monitor carrier arm, single arm, adjustable height, swivelling (Vesa 75/100 adapter, Philips adapter or 5" insertion element)

with round tube carrier, standard rail adapter or screw-in holder for BSP 2500 / BSP 2600 and DVE systems, the monitor carrier\* can be swivelled and tilted

<b>Monitor carrier arm (length = 400 mm) with pneumatic spring**:</b>		
<u>Type of fixing</u> Variable tube carrier	<u>Working load</u> max. 15 kg	
<b>Item no.: 9400-036</b> <input type="checkbox"/>		
<hr/>		Vesa 75 / 100 adapter = 0
<b>Monitor carrier arm (length = 400 mm) with pneumatic spring**:</b>		
<u>Type of fixing</u> Standard rail adapter	<u>Working load</u> max. 15 kg	
<b>Item no.: 9400-034</b> <input type="checkbox"/>		
<hr/>		5" insertion element = 2
<b>Monitor carrier arm (length = 400 mm) with pneumatic spring**:</b>		
<u>Type of fixing</u> Screw-in holder	<u>Working load</u> max. 15 kg	
<b>Item no.: 9400-038</b> <input type="checkbox"/>		
		Philips adapter = 4

 Variable tube carrier	 Standard rail adapter	 Screw-in holder
--	--	--

\* The missing part of the item no. is completed with the figure for the required monitor carrier, e.g. 9400-0384 for a monitor carrier arm with a Philips adapter.

\*\* The pneumatic springs built into the arm are divided into various weight ranges: 3 - 6.5 kg / 7 - 9.5 kg / 10 - 15 kg. In order to ensure perfect functioning of the monitor arm, it is necessary to quote the weight of the monitor being used when ordering.

### Monitor carrier arm, double arm, adjustable height and swivelling (Vesa 75/100 adapter, Philips adapter or 5" insertion element)

with round tube carrier, standard rail adapter or screw-in holder for BSP 2500 / BSP 2600 and DVE systems, the monitor carrier\* can be swivelled and tilted

**Three joint articulated arm consisting of height-adjustable monitor carrier arm (length = 400 mm) with pneumatic spring\*\* and swivel arm:**

Type of fixing	Swivel arm length	Working load
Variable tube carrier		max. 14 kg

Item no.: 9400-044 ☐ 240 mm

Item no.: 9400-046 ☐ 300 mm

**Three joint articulated arm consisting of height-adjustable monitor carrier arm (length = 400 mm) with pneumatic spring\*\* and swivel arm:**

Type of fixing	Swivel arm length	Working load
Standard rail adapter		max. 14 kg

Item no.: 9400-040 ☐ 240 mm

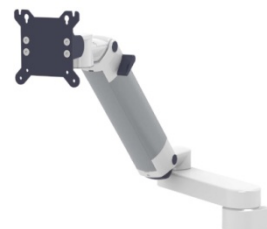
Item no.: 9400-042 ☐ 300 mm

**Three joint articulated arm consisting of height-adjustable monitor carrier arm (length = 400 mm) with pneumatic spring\*\* and swivel arm:**

Type of fixing	Swivel arm length	Working load
Screw-in holder		max. 14 kg

Item no.: 9400-048 ☐ 240 mm

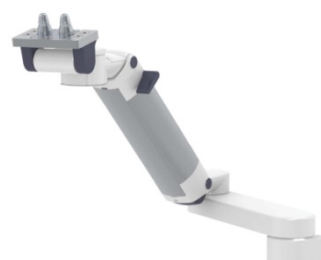
Item no.: 9400-050 ☐ 300 mm



Vesa 75 / 100 adapter = 0



5" insertion element = 2



Philips adapter = 4



Variable tube carrier



Standard rail adapter



Screw-in holder


\* The missing part of the item no. is completed with the figure for the required monitor carrier, e.g. 9400-0484 for a monitor carrier arm with a Philips adapter.

\*\* The pneumatic springs built into the arm are divided into various weight ranges: 3 - 6.5 kg / 7 - 9.5 kg / 10 - 15 kg. In order to ensure perfect functioning of the monitor arm, it is necessary to quote the weight of the monitor being used in any provisioning.

### Monitor carrier arm with keyboard shelf, single arm, adjustable for height and swivelling (Vesa 75/100 adapter)

with round tube carrier, standard rail adapter or screw-in holder for BSP 2500 / BSP 2600 and DVE systems

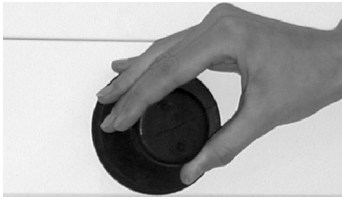
<b>Monitor carrier arm (length = 400 mm) with pneumatic spring**:</b>	
<u>Type of fixing</u>	<u>Working load</u>
Variable tube carrier	max. 15 kg
<b>Item no.: 9400-0368</b>	
<hr/>	
<b>Monitor carrier arm (length = 400 mm) with pneumatic spring**:</b>	
<u>Type of fixing</u>	<u>Working load</u>
Standard rail adapter	max. 15 kg
<b>Item no.: 9400-0348</b>	
<hr/>	
<b>Monitor carrier arm (length = 400 mm) with pneumatic spring**:</b>	
<u>Type of fixing</u>	<u>Working load</u>
Screw-in holder	max. 15 kg
<b>Item no.: 9400-0388</b>	



		
Variable tube carrier	Standard rail adapter	Screw-in holder

\*\* The pneumatic springs built into the arm are divided into various weight ranges: 3 - 6.5 kg / 7 - 9.5 kg / 10 - 15 kg. In order to ensure perfect functioning of the monitor arm, it is necessary to quote the weight of the monitor being used in any provisioning.

Suction lifting tool, rubber  
for opening covers

<p><b>Suction lifting tool, large:</b></p> <p><u>Suction disc</u> diam. = 80 mm</p> <p><b>Item no.: 0000-0700</b></p> <hr/> <p><b>Suction disc, small:</b></p> <p><u>Suction disc</u> diam. = 50 mm</p> <p><b>Item no.: 0000-0701</b></p>	 <p><b>Item no.: 0000-0700</b></p>
---	---



[illegible]

**modultechnik**  
medical supply systems and equipment

modul technik GmbH  
Rudolf-Diesel-Straße 5  
D-56410 Montabaur  
Tel.: (+49) 26 02 / 94 49 - 0  
Fax: (+49) 26 02 / 94 49 - 11  
e-mail: [info@modul-technik.de](mailto:info@modul-technik.de)  
[www.modul-technik.de](http://www.modul-technik.de)

Überreicht durch / distributed by:

Accessories\_01-2013\_E2



The technical data in the brochures as well as the weight, load and dimension information are correct to the best of our knowledge and belief. Errors and omissions excepted. We reserve the right to make changes for the purpose of progress.